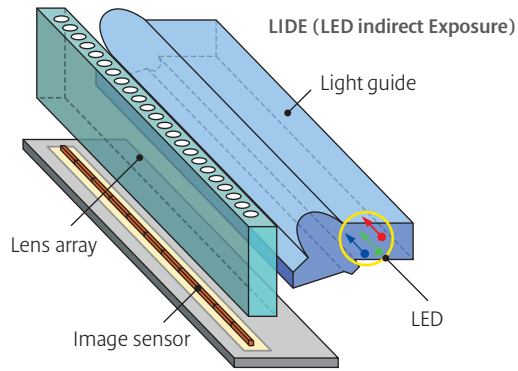


you can  
**Canon** Scanners



# Scanner Technology



**LIDE** (LED Indirect Exposure)  
**LIDE (LED INDIRECT EXPOSURE)**  
 LIDE scanners use LED's, sensors and custom-made lenses in a unique way, placing sensor and light source very close together. The result is ultra-thin, compact and lightweight scanners that never sacrifice image definition for an instant. Using a single USB connection for both power and data, power consumption is low and installation easy. Just as important, they look great and take up minimal space.

## ZERO WARM-UP TIME

High-luminance white LED lamps save time and energy. Conventional fluorescent lamps can require 30 seconds or more just to warm-up. LEDs have zero warm-up time so scanning can start immediately and shut down completely between scans.

## USB BUS POWER

With their negligible appetite for energy, Canon's LIDE scanners are so efficient that they draw all the power they need from the USB data cable. This does away with the need for messy power cables and adapters.



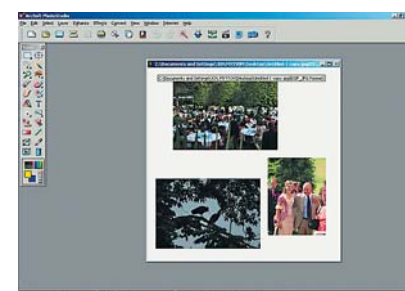
## EZ BUTTONS

To keep things easy, every Canon scanner has up to 7 EZ buttons to simplify common scanner functions – such as scanning photos or film, scan to email, copying and scan to PDF. Up to four EZ buttons can be used to create single or multiple page PDF files directly from the panel. Once scanned, the software can detect and embed text to create word searchable documents. Using the CanoScan Toolbox or MP Navigator EX software\*, further pages can be inserted directly into existing PDF files and page order can be changed with drag-and-drop simplicity.

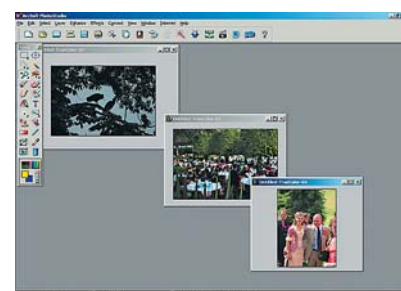
\* Software varies depending on scanner model.

## FAST MULTI-PHOTO MODE

Multi-Photo mode lets you place several photos on the scanning surface at once (without worrying whether they're aligned) and scan them in one scan. Once scanned, the separately identified, straightened and cropped images are transferred to your computer as separate files.



Scan of 3 images with conventional scanner



Scan of 3 images with Fast MultiPhoto Mode

# FARE and QARE

## Automatic retouching and enhancement of film and photos.

With functions such as dust and scratch removal to automatically correct flawed images, FARE for film and QARE for photo prints save hours of manual retouching and improve scan quality\*.



**FARE**  
 When scanning film, visible light is used to generate the image, but this also captures dust and scratches. FARE (Film Automatic Retouching and Enhancement) works by also using infrared (non-visible) light. Infrared light passes through the dye layers of film but not through the surface imperfections, creating a 'map' of defects. Intelligent software then corrects these defects, virtually eliminating the effect of dust and scratches. Invaluable with damaged and old film, FARE is also useful with new film, since it is virtually impossible to keep film pristine.

## QARE

QARE uses intelligent software to provide similar functionality to FARE, but for reflective scans, such as photo prints.

## COLOUR RECONSTRUCTION AND GRAIN REMOVAL

As well as removing imperfections such as dust and scratches, FARE and QARE can bring faded images back to life and reduce the effect of film grain. Colour Reconstruction restores hues and tints – transforming faded film and photo print scans to their original vivid colours. Grain Equalization and Management produces smoother tones by removing the noisy, speckled effect of film grain found in images captured with high ISO settings.

## BACKLIGHT CORRECTION

Simply increasing brightness to improve images with heavy backlighting makes the entire image look 'washed out'. FARE and QARE's Backlight Correction function first detects which areas of the image need correction. Demonstrably superior image quality is then obtained by adjusting only the gamma of those areas, bringing out detail in darker areas without blowing out the correctly exposed sections of the image.

## FILM AUTOMATIC RETOUCHING AND ENHANCEMENT – FARE

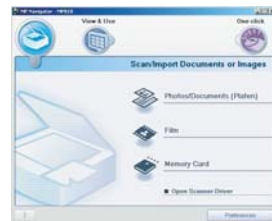


\* Dust and scratch removal is a basic function of QARE, additional functionality varies by scanner model.

## EASY COLOR MATCHING PRINT\*

Because many output devices, such as computer monitors and certain printers, are incapable of reproducing the vast colour space created by Canon scanners, many image workflow applications simply strip this extra information. CanoScan Toolbox uses Adobe RGB colour space – much broader than standard sRGB – passing this extra information on to advanced printers such as the PIXMA Pro9000 for more realistic and exceptionally vibrant results.

\* Supported by selected Canon inkjet printers and Windows OS.



### MP NAVIGATOR EX

Take it easy with MP Navigator EX. Supplied with selected models\*, the software offers greater control and simple, one-click operation for common tasks, like scanning to PDF. The intuitive interface accesses a wide range of functions and creative capabilities. Other models are supplied with CanoScan Toolbox software for simplified control.

\* For CanoScan 8800F and CanoScan LIDE 90 only.

MP Navigator EX

### SilverFast<sup>SE</sup> SILVERFAST SE

The CanoScan 8800F comes bundled with LaserSoft Imaging's SilverFast SE scanning software. SilverFast SE provides you with optimal control over the scanning process for a more efficient and productive digital workflow. Easy to use interfaces enable advanced colour management and tonal adjustment with instant preview. You can add or remove colour casting, localise colour adjustments to specific colour values, and apply mask and layers to scan images. For photo professionals, SilverFast SE provides increased control when scanning film negatives with settings for film type, ISO speed and exposure level. Grain and noise elimination filters help to deliver instantly clear results.

### Adobe<sup>®</sup> Photoshop<sup>®</sup> Elements<sup>®</sup> ADOBE PHOTOSHOP ELEMENTS

The CanoScan 8800F comes bundled with software to make the most of your photos. Adobe<sup>®</sup> Photoshop<sup>®</sup> Elements combines power and simplicity to help you do it all. Edit and enhance your photos. Fix common flaws automatically or use advanced options for more control. Keep every photo at your fingertips. And show off your creativity in even more entertaining ways, including cards, calendars and more.

For more information on scanner technology: [www.canon-europe.com/scanner\\_technology/](http://www.canon-europe.com/scanner_technology/)



Rodolfo Benitez - 'Bowling Alley'

# CanoScan Film & Flatbed



## CanoScan 8800F

This top-of-range film, photo and document scanner is designed for photographers and creative or graphic agencies needing versatile scanner productivity. Advanced features ensure exceptional quality at the highest speed, with Zero Warm-up time.

- Quality – 4800 x 9600 dpi\*; 48 bit colour depth
- Speed – A4, 300dpi scan in approx. 7 sec.; Zero Warm-up
- Film scanning – Adapter for 12x35mm filmstrip, 4x35mm mounted slides, 120 format (max. 6x22cm)
- Functions – Scan to PC, e-mail or PDF
- Design – Compact and slim
- Easy operation – 7 EZ buttons
- Multi-photo mode – Creates separate files in a single pass
- Auto image correction – FARE and QARE for automatic dust & scratch removal; generates usable scans from damaged originals
- Software – SilverFast SE, Adobe Photoshop Elements, MP Navigator EX, ArcSoft PhotoStudio, OmniPage, Presto! PageManager (PC only)

\* See specifications



35mm Film



Medium Format



FARE



## CanoScan 4400F

Scanning your film, photos and documents at an extraordinary 4800 dpi, the CanoScan 4400F delivers top quality images at a blistering pace without blowing your budget. Boasting QARE Level 3, an advanced Z-lid and 7 EZ buttons, this versatile scanner is one smart package.

- 4800 x 9600 dpi\* with 48 bit colour for incredible detail
- FAU (Film Adapter Unit) for up to 6 x 35mm film strip and 4 x 35mm mounted slides
- Super-fast scan engine for exceptional productivity
- QARE Level 3 automatic dust and scratch removal from photographs
- Comprehensive software package includes ArcSoft PhotoStudio, ScanSoft OmniPage SE and Presto! PageManager
- USB 2.0 Hi-Speed connection
- 7 EZ buttons for simplified operation of common scan functions
- Fast Multi-photo mode creates separate files in a single pass
- Advanced Z-lid for scanning thick documents and books

\* See specifications



35mm Film



David Newton - 'Fairy Cap Fungi'



# CanoScan LIDE



“It looks even better.”

Jessie Hillebrand teaches the art and science of fashion photography. Her classroom wouldn't be complete without the CanoScan LIDE 600F. “My students learn all the basics of both film and digital. So, a good scanner is essential to their work. The right scanner will automatically retouch imperfections, like dust and tiny scratches. It doesn't just digitize the image, it actually improves on the quality of the negative or print.”

## The slimmer solution

Maximum quality and minimum desktop space. CanoScan LIDE 600F sets the standard for slim-line scanners.

At 4800 x 9600 dpi, the CanoScan LIDE 600F scanner merges high speed and high resolution with low impact on your desktop. The secret to the slender design is Canon's LIDE technology which replaces bulky lamps with powerful LEDs. An integrated stand allows it to operate upright, for a fraction of the footprint of ordinary flatbed scanners. A Film Adapter Unit, FARE automatic film retouching and 48-bit colour depth are ideal for high-quality enlargement of 35mm film.



### CanoScan LIDE 600F

Ideal for film and photos, the 4800 x 9600 dpi CanoScan LIDE 600F incorporates a Film Adapter Unit for film scanning. FARE technology provides fully automatic dust and scratch removal, saving hours of manual retouching. The 3-way design allows drop-in scanning in any orientation.

- Slim, stylish and ergonomic
- Integrated stand for 'Drop-in' vertical scanning
- FAU (Film Adapter Unit) for 35mm transparencies
- Scans straight to PDF - no additional software purchase required
- Powered by USB 2.0 Hi-Speed connection - no separate power-supply required
- 4800 x 9600 dpi\* with 48 bit colour depth captures fine photographic detail
- FARE Level 3 automatic dust/scratch removal for film; QARE Level 3 for photos
- Fast Multi-photo mode creates separate files in a single pass
- 7 EZ buttons for one-touch operation of common scan functions
- Comprehensive software package includes ArcSoft PhotoStudio, ScanSoft OmniPage SE and Presto! PageManager

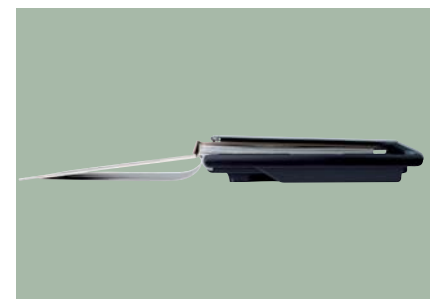
\* See specifications



The scanner can be operated on its edge via an integrated stand, freeing up precious desk space.



The included FAU equipment lets you scan 35mm film strips.



Double-hinged lid also opens parallel to scan thicker objects like books.



**WINDOWS VISTA™**  
All Canon scanners are certified for Microsoft® Windows Vista™



### CanoScan LIDE 90

A mid-range photo and document scanner that's ideal for people that need high quality photo and document scans every so often. Fast, stylish and flexible, its incredibly small size frees up space - so it never gets in your way.

- Quality - 2400 x 4800 dpi\*; 48 bit colour depth
- Speed - A4, 300 dpi scan in approx. 14 sec.
- Design - World's smallest in its class: only 25 x 36.4 x 4cm
- Vertical scanning - With clip-on stand to save space
- Z-lid - Enables scanning of thick documents and books
- Functions - Scan to PC, e-mail and PDF
- Easy operation - 4 EZ buttons
- Auto image correction - QARE for automatic dust & scratch removal from photos
- USB Power - No separate power supply required
- Software - MP Navigator EX, ArcSoft PhotoStudio, OmniPage, Presto! PageManager (PC only)

\* See specifications



### CanoScan LIDE 25

Delightfully slender, reassuringly functional and surprisingly affordable, the 1200 dpi CanoScan LIDE 25 complements any creative home environment. It draws all the power it needs from a convenient USB connection and performs one-touch operation scanning straight to PDF.

- Compact, slim and stylish
- Scans straight to PDF - no extra software purchase required
- Powered by USB connection - no separate power-supply required
- 1200 x 2400 dpi\* with 48 bit colour depth captures fine photographic detail
- QARE Level 3 single click dust/scratch removal and backlight correction for photos
- Fast Multi-photo mode produces multiple files from single scan
- 3 EZ buttons for one-touch operation of common tasks
- Comprehensive, powerful and intuitive creative software suite
- Double hinged Z-lid accepts thick documents and books

\* See specifications



# Scanners Specifications Chart



		<b>CanoScan 8800F</b>	<b>CanoScan 4400F</b>
<b>Type</b>		Desktop Colour Flatbed Scanner with Film Adapter Unit	Desktop Colour Flatbed Scanner with Film Adapter Unit
<b>Scanning Element</b>		CCD	CCD
<b>Light Source</b>		White LED, Reflective and FAU	Cold cathode fluorescent lamp
<b>Optical Resolution</b> <sup>1</sup>		4800 x 9600 dpi	4800 x 9600 dpi
<b>Selectable Resolution</b>		25 – 19200 dpi	25 – 19200 dpi
<b>Interface</b>		USB 2.0 Hi-Speed	USB 2.0 Hi-Speed
<b>Scanning Gradation</b>	<b>Colour</b>	48 bit input / 48/24 bit output	48 bit input / 48/24 bit output
	<b>Greyscale</b>	48 bit input / 16 bit (Film scanning)/8 bit output	48 bit input / 16/8 bit output
<b>Maximum Document Size</b>		A4/Letter (216 x 297mm)	A4/Letter (216 x 297mm)
<b>Scan Speed</b>	<b>Preview Speed (Colour A4)</b>	Approx. 3 sec. <sup>2,3</sup>	Approx. 5 sec. <sup>2,3</sup>
	<b>Scan Speed (Colour A4 300dpi)</b>	Approx. 7 sec. <sup>4</sup>	Approx. 17 sec. <sup>4</sup>
<b>Scanning Speed</b>	<b>Colour</b>	1.0 msec./line (300 dpi) 12.1 msec./line (4800 dpi) <sup>4</sup>	7.7 msec./line (2400 dpi) 14.8 msec./line (4800 dpi) <sup>4</sup>
	<b>Greyscale</b>	1.0 msec./line (300 dpi) 12.1 msec./line (4800 dpi) <sup>4</sup>	7.7 msec./line (2400 dpi) 14.8 msec./line (4800 dpi) <sup>4</sup>
	<b>Black &amp; White</b>	1.0 msec./line (300 dpi) 12.1 msec./line (4800 dpi) <sup>4</sup>	7.7 msec./line (2400 dpi) 14.8 msec./line (4800 dpi) <sup>4</sup>
<b>Film Scanning Speed</b>	<b>Colour</b>	1.5 – 36.3 msec./line	7.4 – 74.0 msec./line
	<b>Greyscale</b>	1.5 – 36.3 msec./line	7.4 – 74.0 msec./line
	<b>Black &amp; White</b>	1.5 – 36.3 msec./line	7.4 – 74.0 msec./line
<b>Film Handling</b>		35mm strip (negative/positive)/12 frames Slide (negative/positive)/4 frames 120 format film/Max. 6 x 22cm (filmstrip only)	35mm strip (negative/positive)/6 frames Slide (negative /positive)/4 frames <sup>5</sup>
<b>Film Scanning Features</b>		FARE level 3 (Film Automatic Retouching & Enhancement) with Reconstruction of Colour, Grain correction, Backlight correction	—
<b>Power Supply</b>		AC Adapter	AC Adapter
<b>Power Consumption</b>	<b>In Operation (maximum)</b>	18W	17W
	<b>Standby</b>	1.5W	4W
	<b>Switch-off</b>	1.0W	—
<b>Scanner Buttons (EZ Buttons)</b>		7 buttons (PDF x 4, COPY, PHOTO/FILM, E-MAIL)	7 buttons (PDF x 4, COPY, PHOTO/FILM, E-MAIL)
<b>Dimensions</b>		272 x 479 x 100mm	259 x 474 x 83mm
<b>Weight</b>		Approx. 4.2kg	Approx. 2.8kg
<b>Operating Range</b>	<b>Temperature</b>	10° – 35°C	10° – 35°C
	<b>Humidity</b>	10% to 90% RH (20% to 80% RH for film scanning), without condensation formation	10% to 90% RH (20% to 80% RH for film scanning), without condensation formation
<b>Operating System Requirements</b>		Windows 2000/XP/Vista <sup>6</sup> Mac OS X v10.2.8 – v10.4	Windows 2000/XP/Vista Mac OS X v10.2.8 – v10.4 Windows 98/98SE <sup>7</sup>
<b>Software Included</b>		ScanGear MP Navigator EX Solution Menu ScanSoft OmniPage SE ArcSoft PhotoStudio Presto! PageManager (PC only) Adobe Photoshop Elements SilverFast SE	ScanGear CanoScan Toolbox ScanSoft OmniPage SE ArcSoft PhotoStudio Presto! PageManager

All Specifications subject to change without notice.

CanoScan and ScanGear are trademarks of Canon Inc. Microsoft, Windows, and the Windows logo are trademarks, or registered trademarks of Microsoft Corporation in the United States and/or other countries.

All brand and product names are trademarks of their respective companies.

- Optical resolution is a measure of maximum hardware sampling resolution, based on ISO 14473 standard
- The fastest speed in USB 2.0 Hi-Speed on Windows PC. Transfer time to computer is not included
- Preprocessing time is not included
- Scan speed indicates the time measured between pressing the scan button of the scanner driver and the on-screen status display turns off. Scan speed may vary depending on system configuration, interface, software, scan mode settings and document size
- Slides must be less than 2mm thick
- Adobe Photoshop Elements does not support Windows 98, 98SE, ME or 2000
- ScanSoft OmniPage SE does not support Windows 98

# Scanners Specifications Chart



		<b>CanoScan LiDE 600F</b>	<b>CanoScan LiDE 90</b>	<b>CanoScan LiDE 25</b>
<b>Type</b>		Desktop Colour Flatbed Scanner with Film Adapter Unit	Desktop Colour Flatbed Scanner	Desktop Colour Flatbed Scanner
<b>Scanning Element</b>		CIS	CIS	CIS
<b>Light Source</b>		LED	LED	LED
<b>Optical Resolution</b> <sup>1</sup>		4800 x 9600 dpi	2400 x 4800 dpi	1200 x 2400 dpi
<b>Selectable Resolution</b>		25 – 19200 dpi	25 – 19200 dpi	25 – 19200 dpi
<b>Interface</b>		USB 2.0 Hi-Speed	USB 2.0 Hi-Speed	USB
<b>Scanning Gradation</b>	<b>Colour</b>	48 bit input / 48/24 bit output	48 bit input / 48/24 bit output	48 bit input / 24 bit output
	<b>Greyscale</b>	16 bit input / 16 3/8 bit output	16 bit input / 8 bit output	16 bit input / 8 bit output
<b>Maximum Document Size</b>		A4/Letter (216 x 297mm)	A4/Letter (216 x 297mm)	A4 / Letter (216 x 297mm)
<b>Scan Speed</b>	<b>Preview Speed (Colour A4)</b>	Approx. 9 sec. <sup>2,3</sup>	Approx. 9 sec. <sup>2,3</sup>	Approx. 16 sec. <sup>2,3</sup>
	<b>Scan Speed (Colour A4 300dpi)</b>	Approx. 19 sec. <sup>4</sup>	Approx. 14 sec. <sup>4</sup>	Approx. 60 sec. <sup>4</sup>
<b>Scanning Speed</b>	<b>Colour</b>	34.3 msec./line (2400 dpi) 34.3 msec./line (4800 dpi) <sup>4</sup>	2.7 msec./line (300 dpi) 18.9 msec./line (2400 dpi) <sup>4</sup>	16 msec./line (600 dpi) 32 msec./line (1200 dpi) <sup>4</sup>
	<b>Greyscale</b>	11.4 msec./line (2400 dpi) 11.4 msec./line (4800 dpi) <sup>4</sup>	2.3 msec./line (300 dpi) 6.3 msec./line (2400 dpi) <sup>4</sup>	5.3 msec./line (600 dpi) 10.6 msec./line (1200 dpi) <sup>4</sup>
	<b>Black &amp; White</b>	11.4 msec./line (2400 dpi) 11.4 msec./line (4800 dpi) <sup>4</sup>	2.3 msec./line (300 dpi) 6.3 msec./line (2400 dpi) <sup>4</sup>	5.3 msec./line (600 dpi) 10.6 msec./line (1200 dpi) <sup>4</sup>
<b>Film Scanning Speed</b>	<b>Colour</b>	5.6 – 223.9 msec./line <sup>4</sup>	—	—
	<b>Greyscale</b>	5.6 – 223.9 msec./line <sup>4</sup>	—	—
	<b>Black &amp; White</b>	5.6 – 223.9 msec./line <sup>4</sup>	—	—
<b>Film Handling</b>		35mm strip (negative/positive)/6 frames	—	—
<b>Film Scanning Features</b>		FARE level 3 (Film Automatic Retouching & Enhancement) with Reconstruction of Colour, Grain correction, Backlight correction	—	—
<b>Power Supply</b>		Powered by USB port	Powered by USB port	Powered by USB port
<b>Power Consumption</b>	<b>In Operation (maximum)</b>	3W	2.5W	2.5W
	<b>Standby</b>	2W	1.0W	1.4W
<b>Scanner Buttons (EZ Buttons)</b>		7 buttons (PDF x 4, COPY, PHOTO/FILM, E-MAIL)	4 buttons (PDF, COPY, PHOTO, E-MAIL)	3 buttons (COPY, PHOTO, E-MAIL)
<b>Dimensions</b>		286 x 409 x 43mm	250 x 364 x 40mm	256 x 383 x 34mm
<b>Weight</b>		Approx. 2.6kg (including FAU/film guide)	Approx. 1.6kg	Approx. 1.5kg
<b>Operating Range</b>	<b>Temperature</b>	5° – 35°C	5° – 35°C	5° – 35°C
	<b>Humidity</b>	10% to 90% RH (20% to 80% RH for film scanning), without condensation formation	10% to 90% RH without condensation formation	10% to 90% RH without condensation formation
<b>Operating System Requirements</b>		Windows 2000/XP/Vista Mac OS X v10.2.8 – v10.4 Windows 98/98SE <sup>5</sup>	Windows 2000/XP/Vista Mac OS X v10.2.8 – v10.4	Windows 2000/XP/Vista Mac OS X v10.2.8 – v10.4 Windows 98/98SE <sup>5</sup>
<b>Software Included</b>		ScanGear CanoScan Toolbox ArcSoft PhotoStudio ScanSoft OmniPage SE Presto! PageManager	ScanGear MP Navigator EX Solution Menu OmniPage SE ArcSoft PhotoStudio Presto! PageManager (PC only)	ScanGear CanoScan Toolbox ArcSoft PhotoStudio ScanSoft OmniPage SE

All Specifications subject to change without notice.

CanoScan and ScanGear are trademarks of Canon Inc. Microsoft, Windows, and the Windows logo are trademarks, or registered trademarks of Microsoft Corporation in the United States and/or other countries.

All brand and product names are trademarks of their respective companies.

- Optical resolution is a measure of maximum hardware sampling resolution, based on ISO 14473 standard
- The fastest speed in USB 2.0 Hi-Speed on Windows PC. Transfer time to computer is not included
- Preprocessing time is not included
- Scan speed indicates the time measured between pressing the scan button of the scanner driver and the on-screen status display turns off. Scan speed may vary depending on system configuration, interface, software, scan mode settings and document size
- ScanSoft OmniPage SE does not support Windows 98



#### **Service Support**

Canon doesn't stop at developing great products, we deliver outstanding after-sales service too. Customers can have complete confidence in their Canon technology with the following benefits;

##### **Helpful, professional Customer Service Advisors**

Our team are trained specifically to support Canon products over the phone in order to resolve customers enquiries quickly and efficiently. Customers can call our customer services Helpline on 08705 143723. Lines are open during normal working hours (9am – 5.30pm) and all calls are charged at standard National rates.

##### **Qualified technicians**

All technicians receive ongoing product training and are equipped with the tools and resources to provide a first class service.

##### **Original Components**

Canon only uses genuine spare parts and components in repairs. This ensures high product performance and protects the product warranty.

Visit [www.canon.co.uk](http://www.canon.co.uk) for more information.

##### **Canon UK Ltd**

Woodhatch  
Reigate  
Surrey  
RH2 8BF  
08705 143723  
[www.canon.co.uk](http://www.canon.co.uk)

##### **Canon (Ir) Business Equipment Ltd**

Arena Road  
Sandyford Industrial Estate  
Dublin 18  
Ireland  
[www.canon.ie](http://www.canon.ie)

Not all products and services are available in all markets. All company and/or product names are trademarks and/or registered trademarks of their respective manufacturers in their markets and/or countries.

All trademarks are acknowledged. All data is based on Canon's standard testing and measuring methods.  
Errors and omissions excepted.

Canon reserves the right to change specifications and physical appearance without notice.

All LCD images and print outs shown are simulated for clarity of reproduction.

you can  
**Canon**

Canon Inc.  
[www.canon.com](http://www.canon.com)

Canon Europa NV  
[www.canon-europe.com](http://www.canon-europe.com)

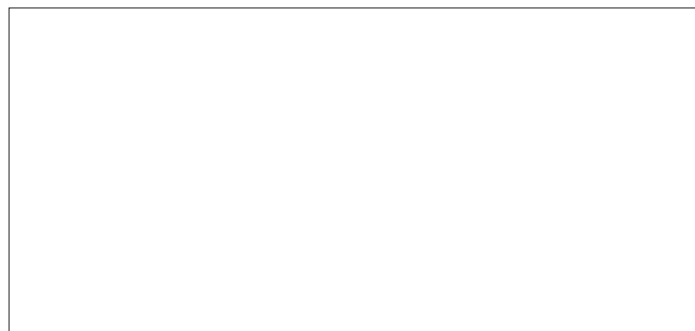
Canon UK Ltd  
[www.canon.co.uk](http://www.canon.co.uk)

Canon (Irl) Business Equipment Ltd  
[www.canon.ie](http://www.canon.ie)

Find the perfect fit with **Careers@Canon**  
[www.canon-europe.com/about\\_us/careers/](http://www.canon-europe.com/about_us/careers/)



© 1986 Panda symbol WWF © WWF Registered Trademark



*We Speak Image*