

you can
Canon

DR-2050C

Workgroup Document Scanner

Get maximum efficiency
with an ultra small workgroup scanner.



DR-2050C

Get more.

Scan, manage and share information. For less money. In less space.

However small your workspace, with Canon's ultra compact workgroup scanner you can digitize all your paper documents easily. The highly economical and colour capable DR-2050C offers enhanced quality, speed and extremely reliable operation. While a rich range of practical functions ensures that it's always ready to meet your most demanding requirements.



You can place it anywhere

Place the DR-2050C on a counter top, the corner of a desk or wherever you want. Canon's innovative and space-saving design ensures an ultra compact footprint. It takes up less than half the area of most other scanners in its class, whether on standby or in use. Making it ideal for bank or government office counters, shop fronts and all busy enterprises where instant document capture is essential in a small space.

You can scan more quickly

The DR-2050C delivers one of the fastest scanning speeds in the work-group category, at 20 pages per minute (A4 portrait, simplex, black and white, 200 dpi). It offers same speed simplex and duplex scanning for all paper sizes up to A4, with the added advantage of greyscale and colour capable scanning. So it can handle a wide range of work, fast and efficiently – throughout numerous organisations and industries.

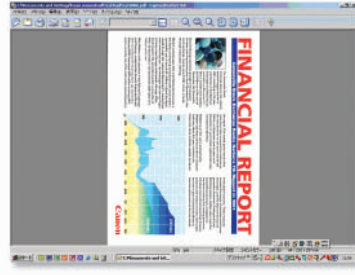
You can scan accurately

You benefit from an extremely high optical resolution for 600 dpi work-group scanners, to ensure consistently superior image output. The DR-2050C minimises image distortion, due to an innovative CIS sensor and lens array mechanism. This revolutionary design also cuts overall energy consumption, eliminates warm-up time and makes the scanner body far more compact.



You can scan easily
and with total reliability.

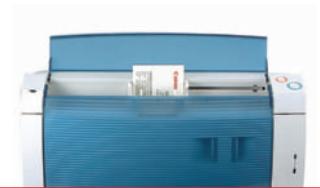




Full screen image



Thumbnail images / Multi-window images



Plug and play simplicity, clear control buttons and a range of user-friendly features ensure effortless operation for everyone. Best of all, the durable and dependable DR-2050C guarantees highly reliable operation, day in and day out. Canon's unique 'retard roller' mechanism achieves highly reliable separation and feeding of documents for productive paper handling – while preventing any problems due to partial double feeding or dust damage. You can 'Scan Batch to Mail' or even to a PDF format.

Bundled software for the DR-2050C includes ISIS™/TWAIN drivers, CapturePerfect and Adobe Acrobat – which offers you extensive scanning and saving functions.

With 'Scan Batch to Mail', scanned images can be instantly attached to a new message for multiple sending, using your existing mail program.

If you need to scan a larger document up to A3/11" x 17" in size, simply fold it in half and use Folio Mode. Both sides of the folded document are scanned and automatically combined into one seamless image.

Also, scanned images can be saved in PDF format - in high compression or standard mode. OmniPage™ OCR software ensures full text OCR is also included. Thus fully optimising all your image application requirements.





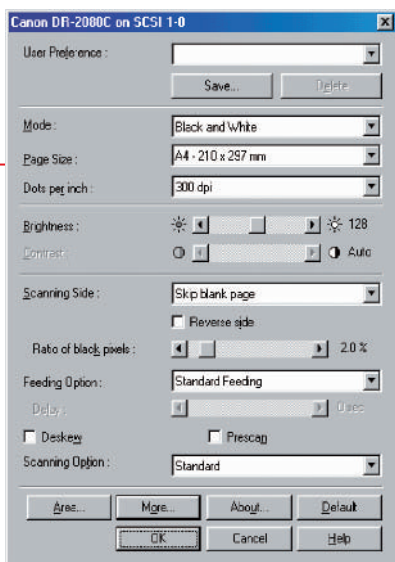
A range of device drivers and software
to maximise image quality and
overall ease of use.



Powerful CapturePerfect utility software

The DR-2050C features new CapturePerfect 3.0 Utility software. When combined with Canon's latest driver and scanner hardware functions, this offers you the capability and versatility you need for extensive applications - while also optimising image quality and overall ease of use. Flexible functions include:

- Save as PDF (OCR)
- Scan to Mail
- Thumb Nail View
- Multi-Window
- Text Enhancement
- Smoothing (Colour and Greyscale)
- De-skew
- Pre-scan
- Flipping over (Front/Back)
- Skip Blank Page
- Image Rotation (0/90/180/270°)
- Gamma Curve Setting (Side & colour)
- Black Border Erasure
- Colour Dropout (with Red enhancement)



User preference – registers up to 20 scanning settings, for all your work.

Text Enhanced Mode – ensures pencil and light text stands out legibly from any background.

Skip Blank page – when scanning batches with both single and double-sided documents, blank pages are detected automatically and this data is discarded, without speed slowdown.

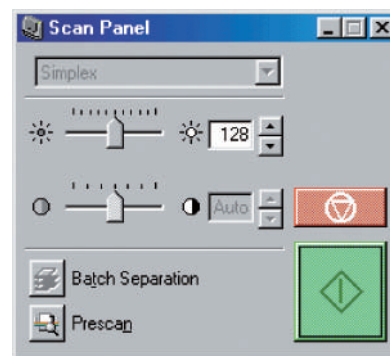
Skew Correction – this ensures a smooth paper flow, even with mixed paper sizes.

Scanning side selection – when scanning a single-sided sheet you can select either side (sequence reverses when scanning multiple documents).

Border Removal – converts black borders into white when documents less than the selected page size are scanned (file size remains same).

Auto Detection – automatically detects the size of documents to be scanned.

Pre-set Gamma Curve – offers an easy way for users to obtain desired images, exactly as required.



Scan Panel – a unique, virtual control panel on your PC screen lets you change scan settings easily, without stopping scanning for multiple dialogs.

Pre-scan – obtains the best image for a batch by adjusting brightness and contrast on the first scanned page – showing immediate results on screen.

Specifications DR-2050C

Type	Desktop sheetfed scanner
Document feeding	Automatic sheet feeding
Document sizes	Width: 55 - 216 mm Length: 70 - 355 mm up to 297 mm when feeding multiple sheets at once
Document thickness	Separation ON: 0.06 - 0.15 mm / Separation OFF: 0.05 - 0.2 mm
Feeder Capacity	50 sheets of fine quality paper or copier paper 10 sheets of stiff, soft or high friction paper
Scanning element	Contact Image Sensor (CMOS)
Light source	LED (red, green and blue)
Scanning modes	Resolutions (dpi): 600 x 600, 400 x 400, 300 x 300, 240 x 240, 200 x 200, 150 x 150, 100 x 100 Black & White: Error Diffusion, Text Enhanced (Simplex, Duplex in each mode) 8-bit grayscale: (Simplex, Duplex) 24-bit colour: (Simplex, Duplex)
Scanning speeds*	(A4 portrait, Binary or Greyscale): 200 x 200 dpi: 20 ppm (Simplex), 39 ipm (Duplex) 300 x 300 dpi: 11 ppm (Simplex), 21 ipm (Duplex) 400 x 400 dpi: 7 ppm (Simplex), 13 ipm (Duplex) 600 x 600 dpi: 3 ppm (Simplex), 7 ipm (Duplex) (A4 portrait, 24-bit Colour): 100 x 100 dpi: 18 ppm (Simplex), 36 ipm (Duplex) 200 x 200 dpi: 7 ppm (Simplex), 12 ipm (Duplex) 300 x 300 dpi: 4 ppm (Simplex), 7 ipm (Duplex) 400 x 400 dpi: 2 ppm (Simplex), 4 ipm (Duplex) 600 x 600 dpi: 1 ppm (Simplex), 1 ipm (Duplex)

Feeding mode	Normal/Auto/Panel
Interface	USB 2.0
Image Compression	CCITT Group 4, JPEG, PDF, BMP, TIFF
Device driver	ISIS & TWAIN
Utility Software	CapturePerfect 3.0, Adobe Acrobat 7.0 std, ScanSoft®'s OmniPage™ SE (OCR)
Other functions	Colour Dropout, Deskew, Automatic Page Size Detection, Skip Blank Page, Border Removal, Prescan, Folio Function, Gamma Compensation, Batch Separation, User Preferences
Power requirements	220 - 240V, 50/60HZ
Power consumption	14W or less
Dimensions (WxDxH)	Feed tray closed: 298 x 100 x 197 mm
Weight	2.5 kg
Options/Consumables	Exchange Roller Kit

*Scanning speeds can vary depending on PC configuration
All company and/or product names are trademarks and/or registered trademarks of their respective manufacturers in their markets and/or countries.
Canon reserves the right to change specifications without notice.



Conforms to the International Energy Star program as an MFP



you can
Canon

Canon Electronics Inc.
www.canon.com

Canon Europa N.V.
www.canon-europe.com

Canon (UK) Ltd
Woodhatch, Reigate
Surrey RH2 8BF
Telephone No: 08000 353535
Facsimile No: 01737 220022
www.canon.co.uk

Canon Ireland
Arena Road, Sandyford
Industrial Estate
Dublin 18, Ireland
Telephone No: 01-2052400
Facsimile No: 01-2958141
www.canon.ie



English-UK Edition 0054W524
© Canon Europa N.V., 2005 (0705)