

Compact, efficient and easy to use

Brother's scanner range has been designed to enhance user experience and make light work of even the most intensive scanning requirements.

Compact design

- Space saving

Easy to use

- One touch scanning
- Intuitive touchscreen LCD*
- Electrostatic panel**

High quality

- Up to 600 x 600 dpi resolution

Increases productivity

- Scan to PC, Mobile, Cloud* and USB Pen
- 20 sheet automatic document feeder
- Auto de-skew
- Skip blank page
- Auto image rotation
- Bleed through prevention

Flexible to save you time

- Up to 18ppm scan speed
- Up to 36ipm 2-sided scan speed
- Scan multiple types of media from paper and receipts to ID and business cards

Easy to share

- Built in wireless network capabilities

Reliable

- Up to 500 scans per day

ADS-1100W/ADS-1600W Technical Specifications

GENERAL

Scanner Type	Automatic document feeder (ADF), automatic 2-sided scanning
Scanning Modes	Colour, greyscale & monochrome
Image Sensor	2 x CMOS dual CIS (contact image sensor) 1 x front and 1 x rear to enable single pass 2-sided scanning
Interface	Hi-Speed USB 2.0, Wireless 802.11b/g/n
Wireless set up	WPS, AOSS
Wireless Security	WEP 64/128 bit, WPA-PSK (TKIP/AES), WPA2-PSK (AES)
Display	6.8cm colour touchscreen

SCANNING

Standard colour & mono scan speed	Up to 16ppm (pages per minute) A4 up to 300 dpi Up to 18ppm (pages per minute) A4 up to 300 dpi
2-sided colour & mono scan speed	Up to 16ppm (pages per minute), 36ipm (images per minute) A4 up to 300 dpi Up to 18ppm (pages per minute), 36ipm (images per minute) A4 up to 300 dpi
Optical scan resolution	Up to 600 x 600dpi (dots per inch)
Interpolated scan resolution	Up to 1,200 x 1,200dpi (dots per inch)
Colour depth	30-bit internal & 24-bit external
Grey scale	256 levels
Supported file formats	JPEG, TIFF & PDF (standard, archive (PDF/A), searchable and password protected)
Scan to USB	Scan directly to a USB flash memory drive, thus removing the requirement for a PC
Scan to email	Scan documents directly into your e-mail communications software
Scan to OCR	Scan documents directly into your word processing application, e.g. Microsoft® Word, for instant editing
Scan to file	Scan directly to a file on your computer or network
Scan to image	Scan directly into your preferred image editing software
Scan to searchable PDF	Scan documents into a PDF file, which enables users to search for key words inside it
Scan To Network	Scan directly to a network folder (Windows® only)
Scan to Mobile Devices	Scan directly to a mobile device with the Brother iPrint&Scan app
Scan to Cloud	Scan to the following web services: Box, Dropbox, EVERNOTE®, Facebook, FLICKR®, Google Drive™, PICASA™ & SkyDrive®
Scan to E-mail Server	Scan documents directly to E-mail addresses via your E-mail server
Scan to FTP	Scan directly to an FTP server

SCANNER DRIVER

Windows®	ISIS, TWAIN & WIA (Windows® 8, Windows® 7, Windows® Vista 32 & 64 bit versions & Windows® XP 32 bit versions)
Macintosh	TWAIN & ICA (Mac OS X v10.6.8, v10.7.x, v10.8.x)
Linux	SANE ²



¹Requires software that comes bundled with the machine. ²Downloadable free of charge from <http://solutions.brother.com>. ³Windows® only. ⁴Requires internet connectivity and access to a cloud service. Fields highlighted in bold are available on the ADS-1600W only

SOFTWARE INCLUDED FOR WINDOWS®

Brother Control Center 4	Easy to use scan software from Brother
NewSoft® Presto! Biz Card 6	Global business card management solution
Nuance™ PaperPort™ 12SE	Powerful document management, PDF creation and editing, including connector for Microsoft® SharePoint®
Nuance® PDF Converter Professional 8	Powerful PDF creation and management software

SOFTWARE INCLUDED FOR MAC

Brother Control Center 2	Easy to use scan software from Brother
NewSoft® Presto! BizCard® 6	Global business card management solution
NewSoft® Presto! PageManager® 9	Document management & sharing program

PAPER HANDLING

Paper input	Up to 20 sheets
Custom paper sizes	Between 5.1mm to 215.9mm in width & 70mm to 297mm in length
Long paper scanning	Yes, up to 215.9mm wide & 863mm long (1 at a time)
Business card scan support	Yes (1 at a time)
Plastic card scan support	Yes (1 at a time)
Receipt scanning	Yes, with carrier sheet

DUTY CYCLE

Maximum daily	Up to 500 sheets
---------------	------------------

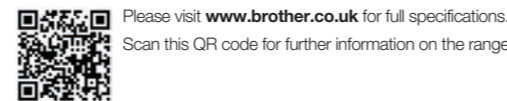
WEIGHTS & DIMENSIONS

With carton	380(W)x170(D)x207(H)mm 2.9KG 380(W)x170(D)x207(H)mm 2.6KG
Without carton	285(W)x103(D)x84(H)mm 1.5KG 285(W)x103(D)x84(H)mm 1.6KG

ENVIRONMENT

Power Consumption (Scanning)	1.4W
Power consumption (Off)	0.25W
Power consumption (Ready)	4W
Power consumption (Deep Sleep)	1.5W
Sound pressure level (Active)	47dB or less
Sound power level (Active)	59dB or less

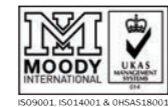
Contact:



brother
at your side

Brother UK Ltd, Audenshaw, Manchester M34 5JD
Tel: +44(0)8444 999 444 Fax: +44(0)161 931 2218
Web: www.brother.co.uk

All specifications correct at time of printing. Brother is a registered trademark of Brother Industries Ltd. Brand product names are registered trademarks or trademarks of their respective companies.
Material code: ZLFT



brother
at your side

Digitise, share, archive

Compact and connected scanning solutions for productive, space saving scanning



Introducing Brother's compact scanner range with Wi-Fi and Cloud connectivity. Digitise, share and archive documents quickly and efficiently, no matter what your space constraints are.

Storing documents can be a costly exercise for many organisations. Brother's compact desktop scanners are the perfect solution for those looking to minimize paper clutter, improve workflow and to do all of this without a machine taking up too much precious office space.

They include a suite of software making it easy to:

- Access and retrieve scanned documents
- Share documents, improving communication and workflow
- Make documentation accessible for your mobile workforce
- Archive documents for best practice/legal obligations
- Securely store sensitive documentation



PC free scanning

Scan direct from the menu screen to your chosen location/application (scan to cloud*, email, network, FTP, image, OCR, memory stick)

*ADS-1600W only



Once your documents have been scanned in, the bundled software supports the document management needs of your organisation and allows more productive use of paper based assets.

**Digitise,
share,
archive**



Built in Twain and ISIS drivers ensure effortless integration into document management systems. EMC Captiva Quickscan Pro free trial bundled.

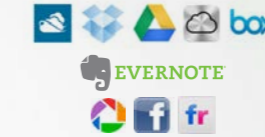
PC FREE SCANNING

Scan direct to USB



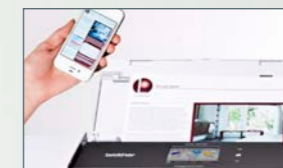
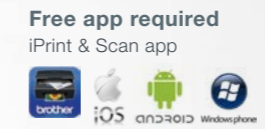
The USB storage facility allows for complete versatility. Scan documents when a PC or WiFi connection is not available

Scan direct to cloud services and view on any device including tablets and smart phones*



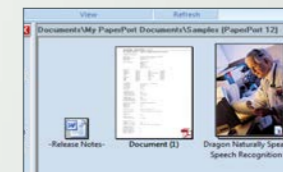
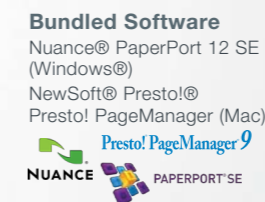
Ensures scanned content can quickly be stored to (and accessed from) the cloud, aligning with your organisation's storage needs and allowing easy access for staff using smart phones and tablets

Scan straight to your mobile device using the free iPrint & Scan app^



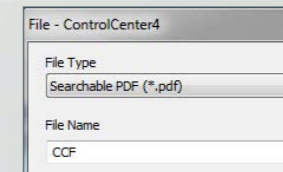
Quick and efficient way to get scanned content directly onto smart phones and tablets, giving you the information at your fingertips

Store all your documents for easier access



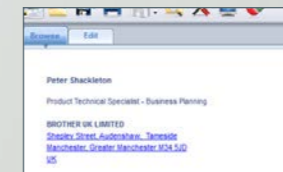
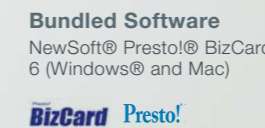
Suite of software providing effective solutions for storing scanned documents, helping to increase the efficiency of your business

Create editable PDF; search using key words



Makes it straightforward to retrieve & edit scanned documents
Sensitive or confidential scanned content can be password protected, to meet your data protection or data security needs

Scan business cards straight to your contacts list



Makes it easier to manage your business contact information

* ADS-1600W only ^Free Download required