

Powerful scanners with advanced features for businesses of any size.

XEROX® DOCUMATE® 6460 & 6480
WORKGROUP / DEPARTMENTAL SCANNERS

Features:

- Barcode Recognition Software
- Visioneer® Acuity image enhancement software
- Max document size 9.5" x 236"
- Create searchable PDF files to make it easy to find scanned documents
- Scan speeds up to 88 ppm / 176 ipm for DocuMate 6480*
- Scan speeds up to 70 ppm / 140 ipm for DocuMate 6460*
- 11,000 page daily duty cycle
- Optional integrated Xerox® Passport Scanner Accessory for ID capture

*@ 200 dpi, b&w, greyscale, or colour



DIGITISING ALL PAPER

In today's digital world, it's important to be able to manage and access the data trapped in ever-increasing stacks of paper documents. The Xerox® DocuMate® 6460 and DocuMate 6480 provide one of the fastest and most user-friendly ways to harness paper into the digital realm, helping organisations manage their scanned information. These compact desktop scanners have everything you need to digitise all your paper documents:

Speed— Load up to 120 mixed sized documents into the document feeder and scan them at speeds of up to 140 images (70 pages) per minute* for DocuMate 6460, and 176 images (88 pages) per minute* for DocuMate 6480, through a high speed USB 3.0 connection. Scanning will be done quickly and the resulting files may even look better than the originals when you apply the software in the bundled suite from Visioneer.

Reliability— The active reversing rollers and ball bearing fitted inside the paper feeding mechanism enhances reliability and provides a maximum daily duty cycle of 11,000 pages. An advanced light array increases the amount of light sources from 1 LED to 45 LEDs, providing superior lighting to produce superior

images. Ultrasonic Multi-Feed Detection allows you to correct overlapped paper by detecting air thickness between documents. If two documents are detected, the user will be alerted to make corrections before the scan resumes, ensuring every page is captured. The scanners also feature built-in features such as de-skew and auto-crop saving your CPU precious processing power, allowing it to receive the images at high speed.

By using two motors instead of one, the scanners can precisely pick and feed one sheet at a time at high speeds, providing years of scanning reliability.

Searchability—The DocuMate 6460 and 6480 will automatically transform your scans into searchable PDF files so when you need them, you can find them. The scanners are powered by Visioneer® OneTouch® technology to scan documents instantly to one of nine preset, yet completely configurable destinations. Visioneer OneTouch takes control of your document management workflows and scans in data using the optimal settings for resolution, colour, duplex, auto-crop, auto-straighten and file format, and then delivers it to virtually any application, folder or device at the touch of a button. Working together

with Acuity image enhancing software, perfect scanned documents are delivered in a searchable PDF format to email, cloud or a custom web application. Not only is this a productivity gain, but it greatly reduces the training time for scanner users, further helping your return on investment.

Versatility— Like its predecessor, the DocuMate 6460 and DocuMate 6480 scanners provide an adjustable document feeder that will fit 9.5-inch wide documents and scan paper as long as 236 continuous inches, plus automatically trim out the margin holes from the final scanned image. This is useful when scanning dot matrix tractor feed paper or long medical chart printouts.

Both scanners fit comfortably on any desk making them the perfect solution for small and large businesses that need to digitise their paper documents. Any industry can greatly benefit from the professional features that are incorporated into these products: from banking and accounting, legal and healthcare, to transportation and manufacturing.

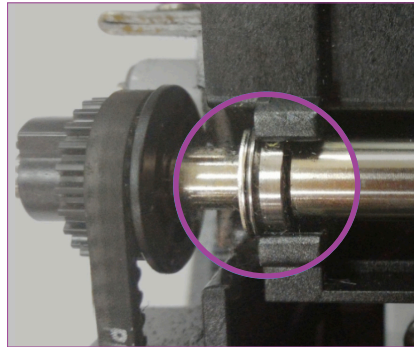
xerox™

HIGH CAPACITY INPUT

The DocuMate 6460 and 6480 desktop scanners were engineered to maximise productivity. The automatic document feeder (ADF) holds an impressive 120 sheets (20 lb. paper) and is designed from the ground up to provide error-free scanning. These design innovations include:

- **Embossed ID cards** – Scan multiple plastic hard cards through the ADF
- **Wide Input Tray** – Ability to feed through tractor fed or dot matrix printer paper without tearing away the edges
- **High Capacity ADF** – Holds 120 sheets
- **Hardware De-Skew** – This process helps align paper to rollers and paper guides, ensuring straight paper feeding and the elimination of feeding errors

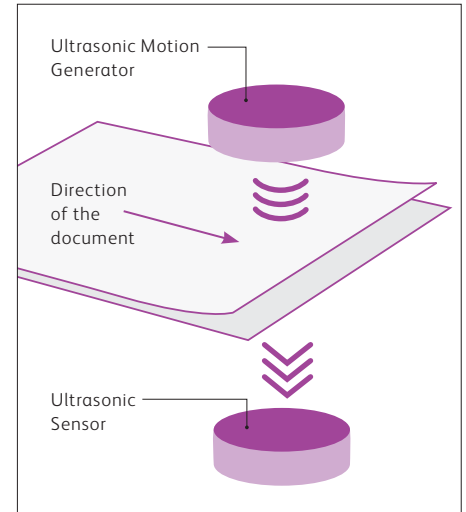
Advanced Feed Rollers – The Award Winning active reversing rollers and ball bearing enhances feeding reliability making the maximum daily duty cycle of 11,000 sheets possible.



DESIGNED OUTPUT

High capacity and well-designed output trays are configurable for a wide variety of media including checks, wide paper, letter and legal documents. Fast USB 3.0 data transmission ensures top-speed scanning. Output features include:

- **Ultrasonic Multi-Feed Detection**
An ultrasonic sound wave passes through the paper and lets the sensor detect if there are multiple sheets moving through, thus preventing doublefeed mistakes in scans.

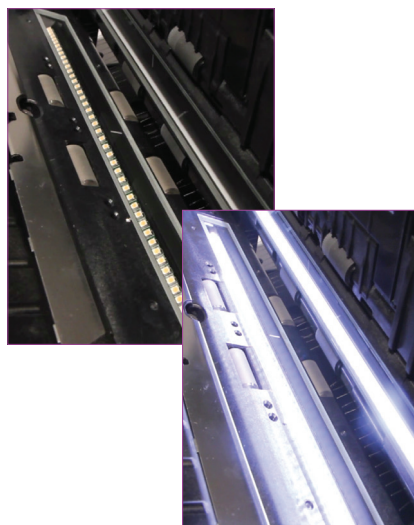


FAST AND RELIABLE

We know that time is money, and the DocuMate 6400 series provides production speed at the desktop. The scanners offer high speed throughput and the following accompanying features to match the raw scan speeds:

- **Up to 70/88 ppm and 140/176 ipm** – Top speeds listed at 200 dpi for the 6460 and 6480 respectively
- **Onboard IP** – Provides de-skew and crop onboard the device, saving the computer precious processing power and allowing it to receive the images at high speed
- **Dual Motors** – By using two motors instead of one, the DocuMate 6400 series scanners can precisely pick and feed one sheet at a time at high speeds, providing years of scanning reliability

Light Bar – An advanced light array increases the amount of light sources from 1 LED to 45 LEDs, providing superior lighting to produce superior images.



- **Adjustable Output Tray by Length**
Stops and catches shorter documents like checks, reducing the time needed to collect odd size documents
- **Adjustable Output Tray by Height**
Allows for extra thin or delicate documents to pass through the scanner, helping eliminate the chances of damaging the document
- **Fast Data Transmission**
(SuperSpeed USB 3.0 interface)

PASSPORT SCANNING

- **Optional Xerox Scanner Accessory** provides integrated identity capture solution - handles passports, ID and other small documents.



Xerox® DocuMate® 6460 / 6480 Scanner Software and Specifications

VISIONEER® ACUITY

Visioneer Acuity enables your scanner to instantly improve the visual clarity of the scan. Features include: patch code detection, barcode detection, scale image plus auto-crop, auto-straighten, auto-rotate, and much more, all with the touch of a button.

VISIONEER ONETOUCH®

OneTouch connects your scanner with a powerful set of settings so with one touch of a button the scanned document is automatically sent to a preconfigured destination such as email, your printer, a file folder, or one of many cloud destinations.

ABBY® FINEREADER SPRINT

This powerful OCR tool converts scanned images into editable text reducing the need for retyping and paper storage. Convert your scans into various file formats, including searchable PDFs. It accurately reads documents in up to 179 languages and precisely preserves the original document's layout and formatting.

VISIONEER TWAIN DRIVERPLUS

DriverPLUS offers an impressive array of settings to enable precise customisation of the scan – far beyond current TWAIN specifications and user experience. DriverPLUS also delivers Parallel Scanning, allowing multiple same-model scanners to be connected to a single PC and run concurrent jobs. Visioneer Acuity integration adds intelligent image enhancement and PC Optimisation to enable full-speed scanning.

OPTIONAL ACCESSORIES

- Xerox® Passport Scanner Accessory (Model Number: X-Passport)

Xerox® DocuMate 6460 / 6480 Product Specifications

Model Number	XDM6460-U	XDM6480-U
Xerox Part Number	100N03243	100N03244
Scan Speed: DocuMate 6480	Up to 80 ppm / 160 ipm: 300 dpi (B&W, greyscale, or colour)	
	Up to 88 ppm / 176 ipm: 200 dpi (B&W, greyscale, or colour)	
Scan Speed: DocuMate 6460	Up to 65 ppm / 130 ipm: 300 dpi (B&W, greyscale, or colour)	
	Up to 70 ppm / 140 ipm: 200 dpi (B&W, greyscale, or colour)	
Scan Method	Duplex Automatic Document Feeder	
Optical Resolution	200, 300, 600 dpi	
Interpolated Resolution with Visioneer Acuity	75, 100, 150, 400, 500, 1200 dpi	
Image Sensor	CCD (Charge Coupled Device)	
Light Source	LED (Light Emitting Diode) instant on	
Background	Black	
Output Bit Depth	24-bit colour, 8-bit grayscale, 1-bit black & white	
Scanning Media Supported	Paper, plastic ID cards, photos	
Interface	Hi-speed USB 3.0 (2.0 compatible)	
Maximum Card Thickness	0.051" (1.25 mm)	
Scanner Dimensions (paper trays extended) (W x D x H)	316 x 680 x 239 mm (12.5" x 26.8" x 9.4")	
Scanner Dimensions (paper trays collapsed) (W x D x H)	316 x 191 x 168 mm (12.5" x 7.5" x 6.6")	
ADF Minimum Document Size	51 x 51 mm (2" x 2")	
ADF Maximum Document Size	241 x 5994 mm (9.5" x 236") @ 200 dpi	
Maximum Scan Area	216 x 5994 mm (8.5" x 236") @ 200 dpi	
ADF Paper Thickness Range	7 – 110 lbs. (27 – 413 g/m ²)	
ADF Capacity	120 pages (20 lb., 75 – 80 g/m ² paper)	
Weight	4.17 kg (9.2 lb.)	
Duty Cycle	11,000 pages	

BOX CONTENTS

- Xerox® DocuMate6460 or 6480 Scanner
- Power Cable
- USB 3.0 Cable
- Power Supply
- Quick Installation Guide
- Technical Support Card
- DVD-ROM including:
 - User's Manual
 - Visioneer OneTouch
 - Visioneer Acuity
 - ABBYY FineReader Sprint
 - Scanner Drivers: Visioneer Windows TWAIN™ DriverPLUS, EMC® Captiva® ISIS® and Microsoft Windows Image Acquisition (WIA) Driver

PC MINIMUM SYSTEM REQUIREMENTS

- Intel® Pentium® IV or equivalent processor
- Compatible with:
 - Windows® 10 Pro, Home, Enterprise and Education
 - Windows 7 Pro, Home, Enterprise and Ultimate
 - Windows 8/8.1 Pro, Core and Enterprise
- 2GB RAM
- 350 MB available hard disk space for Drivers
- 1GB for OneTouch
- 1-2GB for additional applications
- Dual layer DVD-ROM drive
- USB port



For more information about the Xerox line of scanners, visit www.xeroxscanners.com

©2019 Xerox Corporation. All rights reserved. Xerox® and DocuMate® are trademarks of Xerox Corporation in the United States and/or other countries and are used under licence from Xerox Corporation. Visioneer is an authorised trademark licensee of Xerox®. Visioneer and OneTouch® are trademarks of Visioneer, Inc. Microsoft®, Windows® and SharePoint® are trademarks of Microsoft Corporation in the United States and/or other countries. Intel® and Pentium® are trademarks of Intel Corporation in the U.S. and/or other countries. Universal Serial Bus is a trademark of USB Implementers Forum, Inc. (USB-IF). ABBYY®, ABBYY® FineReader and FineReader are either registered trademarks or trademarks of ABBYY Software Ltd. TWAIN™ is a trademark of TWAIN Working Group. EMC®, Captiva® and ISIS® are trademarks of EMC Corporation. Ubuntu® is a trademark of Canonical Ltd. ENERGY STAR® and the ENERGY STAR® mark are registered trademarks owned by the U.S. Environmental Protection Agency. All other trademarks are the property of their respective owners and are hereby acknowledged. Prices, features, specifications, capabilities, appearance and availability of products and services are subject to change without notice. 11/19 BR26224-UK

