

**XEROX**

**DocuMate™ 272**



# Duplex scans at 66\* Scans ID Cards under 3 seconds\*

The New Xerox® DocuMate™ 272  
Two Scanners in One!

- **33 pages per minute and 66 images per minute\* in duplex**
- **Integrated card scanner – handles embossed insurance and ID cards**
- **One Touch feature eliminates up to 12 steps in scanning documents**
- **Superior image quality and OCR accuracy with Kofax VRS software**
- **Convert documents into PDF files that can be scanned to network drives for sharing**
- **Hi-Speed USB 2.0 interface (USB 1.1 compatible)**
- **Small footprint fits easily on the desktop (6" x 13")**

**One Touch  
scans directly  
to searchable PDF!**

\*Up to 66 ipm at 200 dpi, black & white

## **Xerox DocuMate 272**

There's a lot to like about the DocuMate 272 – the faster, better, easier-to-use workgroup scanner solution for vertical markets that need to scan plastic ID cards as well as mixed sized documents. 30% faster than the leading brand workgroup scanner in duplex mode, the DocuMate 272 is the price and performance leader in its category. It also includes a powerful suite of applications that improve image quality, OCR accuracy, and document management. And its revolutionary One Touch scanning and small compact size make it easy to use on any desktop or in any department.

## **Healthcare and Medical Markets**

When a patient is admitted to the hospital, the registration staff makes a copy of the patient's driver's license and insurance card to put with the file. The insurance information is then keyed into the database. In healthcare, about 20% of the claims submitted by hospitals are denied by the insurance companies. Ninety percent of those are due to typographical errors. By scanning patient documents, insurance cards and driver's licenses at patient registration and creating a digital image accessible to the patient's authorized care providers; hospitals can reduce registration time, solve data inaccuracy problems and improve customer relationships.

## **Work Faster**

The DocuMate 272 quickly handles many different tasks at hand – right at the desktop. It has a 50-page automatic document feeder that scans up to 66 images per minute using dual CCDs – doubling your speed and productivity for two-sided documents.

## **Work Better**

The DocuMate 272's powerful software, robust functionality, and hardware specifications deliver the speed and quality you would expect from a more expensive scanner. A searchable PDF feature lets you send, copy, paste, re-use, and highlight text while maintaining the integrity of the original document image.

The bundled Kofax VRS software provides such capabilities as autoexposure and wide angle de-skew. VRS also helps improve the accuracy of recognition software, thereby reducing the need for manual correction of intelligent character recognition and OCR results.

The DocuMate 272 also features:

- 600 dpi optical resolution
- 48-bit internal color
- Hi-Speed USB 2.0 interface

And document size is not an issue for the DocuMate 272. It scans everything from business cards and photos up to legal-size documents, with superior image quality.

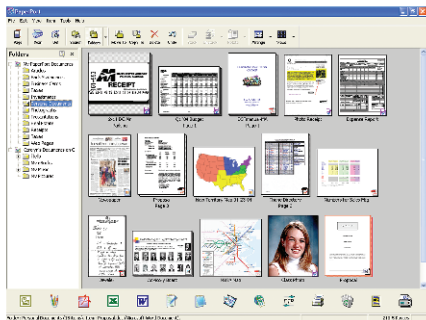
## **Work Easier**

The DocuMate 272's One Touch technology scans from the desktop to nine different customizable applications or devices, and documents can be converted to text-searchable PDF in one easy step. Now you can instantly search documents for keywords or phrases.

The DocuMate 272's one-step installation is a snap with the plug and play Hi-Speed USB 2.0 port. And its small footprint, just 6" x 13", makes it ideal for the desktop.



**XEROX**  
**DocuMate 272**



**ScanSoft PaperPort**

The easiest way to organize, find, and share all your paper, PDF, and digital documents.

**Superior Image Quality and OCR Accuracy**

Get superior results with Kofax VirtualReScan, an award winning, patented technology that automatically ensures the best possible image quality and OCR accuracy for scanned document images. As pages pass through the scanner, VRS performs a multipoint inspection of each document, instantly checking and adjusting alignment (skew), brightness, contrast, and image clarity.

**Scan to Text-Searchable PDF**

Transform volumes of paper or photos into organized digital files that you can quickly find, use, and share. In PDF format, you can instantly search documents for keywords or phrases. This gives them additional archival benefits beyond traditional storage, and the widely accepted PDF format lets everyone view and print documents – on any computer.

**Convert Existing Files to PDF**

The DocuMate 272's PaperPort software lets users convert existing electronic files to PDF for storage or transfer. Supported file types include Microsoft Office, Corel, and AutoDesk documents, as well as the popular TIF, MAX, JPG, and BMP formats.

**Complete Batch Scanning, Image Manipulation, and Multipage Support**

The included QuickScan software provides all the necessary capabilities for high-speed ISIS® based scanning, image enhancement, viewing, annotation, and printing of images for both black-and-white and color pages. Developed by Pixel Translations, the creators of ISIS, QuickScan's strengths include features such as batch scanning, PDF support, image manipulation, multipage support, and more.

**Select Multiple Document Destinations**

DocuMate 272's One Touch feature lets you send documents to preselected destinations, including searchable PDF. Quickly turn PDF files and stacks of papers into easily editable word processing and spreadsheet documents.

**Compatible With More Than 250 ISIS-Certified Applications**

ISIS drivers certified by Pixel Translations ensure that the DocuMate 272 functions properly with the more than 250 commercially available ISIS-compatible imaging and document management applications.

**Software That Gets the Job Done**

The DocuMate 272's robust software suite includes comprehensive ISIS and TWAIN support:

- Kofax VRS
- Pixel Translations QuickScan
- ScanSoft PaperPort
- ScanSoft OmniPage Pro

**DocuMate 272 Product Specifications Model# XDM2725D-WU**

Scan Speed	
Black & White, 200 dpi	Up to 33 ppm simplex / 66 ipm duplex
Color, 150 dpi	Up to 33 ppm simplex / 42 ipm duplex
Optical Resolution	600 dpi
Scanner Bit Depth (color)	48-bit internal (16-bit A/D converter recognizes over 281 trillion colors)
Scanner Bit Depth (grayscale)	16-bit internal (65,536 shades of gray)
Output Bit Depth	24-bit color, 8-bit grayscale, 1-bit black & white
Scan Method	Fast Duplex Sheetfed
Interface	Hi-Speed USB 2.0 (USB 1.1 compatible)
Dimensions	13"(w) x 7.5"(d) x 12.25"(h)
Weight	10.5 lbs.
ADF Maximum Document Size	8.5" x 14"
ADF Minimum Document Size	3.5" x 2"
ADF Capacity	50 sheets (18 lb. paper)
ID Card Scanner	Credit-card sized ID cards - 3 3/8" x 2 1/8" up to 1.3 mm thick plus embossing

**Minimum System Requirements**

- Pentium® II or equivalent processor
- Windows® 2000/Me/XP
- 128MB RAM (256MB RAM for Windows XP)
- 200MB available hard disk space
- CD-ROM drive
- USB port

**Contents**

- DocuMate 272 scanner
- Power Supply
- USB 2.0 Cable
- Quick Install Card
- Technical Support Card
- User's Manual
- CD-ROM including:
  - Kofax VRS
  - Scanner Drivers (TWAIN and Certified ISIS Driver)
  - ScanSoft PaperPort
  - ScanSoft OmniPage Pro
  - Pixel Translations QuickScan
  - ArcSoft Scrapbook Suite



For more information about the Xerox line of scanners, visit [www.xeroxscanners.com](http://www.xeroxscanners.com)