

# XEROX®

## DocuMate® 632



# Departmental Duplex scans at 70\* IPM

The Xerox® DocuMate® 632  
Document Scanner

- **35 pages per minute and 70 images per minute\* in duplex**
- **99 One Touch destinations can be customized for each person in the department**
- **Legal size flatbed**
- **100 pages ADF capacity\*\***
- **Superior image quality and OCR accuracy with Kofax VRS software**
- **Convert documents into PDF files that can be scanned to network drives for sharing**
- **Hi-Speed USB 2.0 interface (USB 1.1 compatible)**

**Visioneer OneTouch scans directly to searchable PDF!**

\*Up to 70 ipm at 200 dpi, black & white  
\*\* 16# paper

### Xerox DocuMate 632

The Xerox DocuMate 632 is a departmental duplex flatbed scanner that scans up to 70 images per minute (ipm) in duplex mode. The 8.5" x 14.5" flatbed is the only departmental scanner that can be programmed to automatically scan to 99 different customizable applications or devices. Documents can be converted to text-searchable PDF in one easy step. Now you can instantly search documents for keywords or phrases. The DocuMate 632's one-step installation is a snap with the plug and play Hi-Speed USB 2.0 port.

The Xerox DocuMate 632 is the price/performance solution perfect for company wide scanning requirements. Xerox offers this model at a price that enables businesses to achieve high levels of productivity by distributing fast cost-effective departmental scanners throughout the organization.

### Vertical Market Solutions

From Sarbanes-Oxley to the Patriot Act, records and paper management has become an important part of doing business. Today's trend is that more and more scanning is moving from the centralized offices and agencies to the departmental where the documents are received and can be processed immediately into electronic files that can be securely and accurately stored, transmitted and retrieved. The US Government is broadly standardizing on Adobe's PDF file format and the DocuMate 632 easily converts scanned documents into text-searchable PDF files at the press of a single button.

Law offices, courts, clients and administrators handle and manage substantial quantities of paper.

Documents are the substance of communication, reference, negotiation and execution of contracts, laws and evidence. Paper is expensive to store and retrieve. Scanning incoming and legacy documents into text-searchable PDF with the DocuMate 632 changes the entire document paradigm in a law office. It is useful for document archiving as well as Electronic Case Filing, which US District Courts now accept, but only in PDF format.

### Work Smarter

The DocuMate 632's powerful software, robust functionally and hardware specifications delivers the speed and quality for departmental scanning. Scanning flexibility for nearly any document through the high-speed ADF or on the legal size flatbed, multiple file format options including text-searchable PDF, and the 6500 page per day duty cycle accommodates the office organization environment.

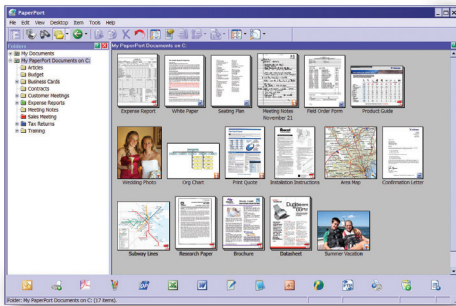
The bundled Kofax VRS software provides such capabilities as autoexposure and wide angle deskew. VRS also helps improve the accuracy of recognition software, thereby reducing the need for manual correction of intelligent character recognition and OCR results.

The DocuMate 632 also features:

- 600 dpi optical resolution
- 48-bit internal color
- Hi-Speed USB 2.0 interface

Document size is not an issue for the DocuMate 632. It scans everything from business cards and photos up to legal-size documents, with superior image quality.

# XEROX® DocuMate® 632



**ScanSoft PaperPort Professional**  
The easiest way to organize, find, and share all your paper, PDF, and digital documents.

### Select Multiple Document Destinations

DocuMate 632's one touch feature lets you send documents to preselected destinations, including searchable PDF. Quickly turn PDF files and stacks of papers into easily editable word processing and spreadsheet documents.

### Superior Image Quality and OCR Accuracy

Get superior results with Kofax VirtualReScan, an award winning, patented technology that automatically ensures the best possible image quality and OCR accuracy for scanned documents. As pages pass through the scanner, VRS performs a multipoint inspection of each document, instantly checking and adjusting alignment (skew), brightness, contrast, and image clarity.

### Communicate with hundreds of ECM and DIM Applications

The Xerox DocuMate 632 includes an ISIS driver certified by Pixel Translations and an advanced TWAIN driver developed by JFL Peripheral Solutions to ensure that the scanner will function properly with the more than 250 commercially available ISIS-compatible applications and communicate effectively with enterprise content management (ECM) and document image management (DIM) software solutions with the press of a single button.

### Scan to Searchable PDF

Transform volumes of paper or photos into organized digital files that you can quickly find, use, and share. In PDF format, you can instantly search documents for keywords or phrases. This gives them additional archival benefits beyond traditional storage, and the widely accepted PDF format lets everyone view and print documents – on any computer.

### Convert Existing Files to PDF

The DocuMate 632's PaperPort Professional software lets users convert existing electronic files to PDF for storage or transfer. Supported file types include Microsoft Office, Corel, and AutoDesk documents, as well as the popular TIF, MAX, JPG, and BMP formats.

### Software That Gets the Job Done

The DocuMate 632's robust software suite includes comprehensive ISIS and TWAIN support:

- Kofax VRS
- ScanSoft PaperPort Professional
- ScanSoft OmniPage Pro
- Pixel Translations QuickScan

## DocuMate 632 Product Specifications Model# XDM6325D-WU

Scan Speed	
Black & White, 200 dpi	Up to 35 ppm simplex / 70 ipm duplex
Color, 150 dpi	Up to 35 ppm simplex / 70 ipm duplex
Optical Resolution	600 dpi
Scanner Bit Depth (color)	48-bit internal (16-bit A/D converter recognizes over 281 trillion colors)
Scanner Bit Depth (grayscale)	16-bit internal (65,536 shades of gray)
Output Bit Depth	24-bit color, 8-bit grayscale, 1-bit black & white
Scan Method	Fast Duplex Sheetfed
Interface	Hi-Speed USB 2.0 (USB 1.1 compatible)
Dimensions	20.8"(w) x 14.25"(d) x 9.25"(h)
Weight	24.75 lbs.
ADF Maximum Document Size	8.5" x 14.5"
ADF Minimum Document Size	3.5" x 2"
ADF Capacity	100 sheets (16 lb. paper)
Duty Cycle	6,500 pages/day

### Minimum System Requirements

- Pentium® II or equivalent processor
- Windows® XP\*/2000\*\*
- 512MB RAM (Recommended 1GB)
- 200MB available hard disk space
- CD-ROM drive
- USB port

\*Service Pack 1 and 2 \*\*Service Pack 4

### Support Contracts

Our multi-faceted support offerings are designed to meet your needs. Offerings include our "Classic" extended warranty, "Executive" warranty and "Executive Plus" On-Site warranty. We also offer certification to qualified resellers through our Helpdesk Certification program. Visit [www.xeroxscanners.com](http://www.xeroxscanners.com) to learn more about the many options available to you.

### Contents

- DocuMate 632 Scanner
- Power Supply
- USB 2.0 Cable
- Quick Install Card
- Technical Support Card
- User's Manual
- CD-ROM including:
  - Kofax VRS
  - Scanner Drivers
  - TWAIN and Certified ISIS Driver)
  - ScanSoft PaperPort Professional
  - ScanSoft OmniPage Pro
  - Pixel Translations QuickScan

