

DR-2010M
DR-2510M

Workgroup scanners.

HIGH SPEED, HIGH QUALITY -
FOR MAC USERS.

you can



imageFORMULA

Canon



Small on the desktop. Big on performance.

High speed, simple to use scanners are important for workgroup productivity, whatever IT platform you use. Now our latest space-saving desktop colour scanners – the DR-2010M and DR-2510M – bring Canon’s unrivalled performance and exceptional reliability to Mac users.









Compact design, large performance.

While delivering exceptional performance, the compact, space saving design of the DR-2010M and DR-2510M ensure efficient use of workspaces. The scanners have a strong robust design, built to handle up to 1,500 pages a day – ideal for peak periods.

Productivity, at the speed you choose.

The DR-2010M and DR-2510M provide the fastest, most economical and effortless way to capture paper documents and increase productivity in the office.

Using Canon’s innovative CMOS CIS image sensor technology, the DR-2010M and DR-2510M scan at the same highly productive speeds, whether your documents are black-and-white, greyscale or colour. For easy, one push ad hoc scanning, the DR-2010M offers fast colour scanning of 20 pages per minute (40ipm for duplex) with the robust DR-2510M, ideal for mission-specific scanning, providing scan speeds of 25 pages per minute (50ipm for duplex).

 20ppm	 20ppm	 40ipm	 40ipm	 25ppm	 25ppm	 50ipm	 50ipm
SIMPLEX MODE		DUPLEX MODE		SIMPLEX MODE		DUPLEX MODE	
DR-2010M A4 Portrait – 200dpi				DR-2510M A4 Portrait – 200dpi			

Canon's innovative technology ensures that the scanners are up to 50% more efficient than the competition.

Higher image quality keeps you in the picture.

However variable the types of documents to scan – whether they are on rough textured paper or the text is faint – the scanned result will be of the highest quality. Both scanners have an optical resolution of 600dpi as well as a range of outstanding features, including Auto Page Size Detection and Deskew, Automatic Colour Detection and Text Orientation, saving time by reducing time spent pre-sorting documents or adjusting settings. Just load a batch of documents and let the scanner go to work.

Energy efficiency savings built-in.

We understand how vital it is to save energy – and reduce costs – where you can. The DR-2010M and DR-2510M help with both. Energy Star compliant, Canon's innovative technology ensures that the scanners are up to 50% more efficient than the competition. The scanners can also be automatically switched on or off in line with the Mac they are attached to – so they can't be left on accidentally – helping to reduce overall energy consumption.

Sizeable capabilities – at a touch.

As documents don't come in standard sizes, the DR-2010M and DR-2510M are well prepared to cope, with a straight-through slanted paper path to provide trouble-free scanning. From thin and thick, to embossed media including business cards, photographs and A3 documents (in folio mode) they can scan mixed document types with no special preparation. Ultrasonic double feed detection on the DR-2510M also provides more reliable document handling.

Versatile applications.

For greater plug-and-scan productivity and flexibility the DR-2010M and DR-2510M have three customisable job buttons and powerful applications that make scanning easier.

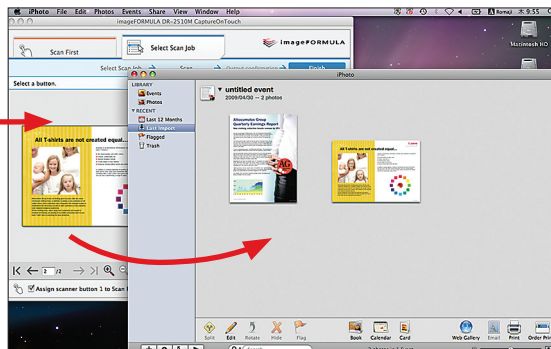
TWAIN Driver – the bundled TWAIN driver readily connects with Mac applications, such as iPhoto and ImageCapture enabling seamless connectivity.

CaptureOnTouch – boosts users productivity with easy and effective scanning operation. Two simple scanning methods are available:

- **Scan First** – the user scans a document first before selecting the file format and destination.
- **Select Scan Job** – used for the quick and easy execution of routine scanning tasks where all scanner and file-saving settings have been pre-configured, improving scan efficiency and accuracy.

Presto! PageManager – is simple but powerful filing software that enables you to store, organise and edit your digital documents.

Presto! BizCard Reader – quickly and easily converts vital contact information on business cards into a convenient, searchable digital database that can be easily synchronised between desktops, laptops, iBooks, PDAs and PIMs.



The scanner job buttons can be used to easily send scanned images through CaptureOnTouch software directly into iPhoto (Mac application).

Specifications: imageFORMULA DR-2010M/DR-2510M

Type Document Reading Sensor Optical Resolution Light Source Reading Side Interface Dimensions Weight Power Requirements Power Consumption Operating Environment Environmental Compliance	Desktop Type Sheet Fed Scanner CMOS CIS 1 Line Sensor 600dpi RGB LED Front / Back / Duplex / Skip Blank Page / Folio High Speed USB 2.0 Tray Closed: 298 (W) x 160 (D) x 160 (H) mm Tray Opened: 298 (W) x 490 (D) x 245 (H) mm Approx. 2.4 kg AC100 - 240V (50/60Hz) Scanning: 16W, Sleep Mode: 2.2W Power Turned Off: less than 0.5W 10 - 32.5°C (50 - 90.5°F), Humidity: 20 - 80% RH RoHS and ENERGY STAR		
READING SPEED* Portrait (A4) B & W / Grayscale Colour	DR-2010M		DR-2510M
	200/300dpi 200dpi 300dpi	20ppm/40ipm 20ppm/40ipm 13ppm/26ipm	25ppm/50ipm 25ppm/50ipm 15ppm/30ipm
DOCUMENT SPECIFICATIONS Width Length Thickness International Standard Card Long Document Mode Paper Separation Feeder Capacity Output Resolution	50 - 216mm 53.9 - 356mm Automatic Feeding - 52 - 128g/m ² (0.06 - 0.15mm) Bypass Mode - 40 - 157g/m ² (0.05 - 0.20mm) Width: 53.9mm, Length: 85.5mm, Thickness: 0.76mm (Embossed card and horizontal scanning is supported) 1000mm max. Retard Roller 50 sheets (80g/m ²) 100 x 100dpi, 150 x 150dpi, 200 x 200dpi, 240 x 240dpi, 300 x 300dpi, 400 x 400dpi, 600 x 600dpi		
OUTPUT MODE Binary Greyscale Colour	B&W / Error Diffusion / Advanced Text Enhancement II** 8bit (256 level) Grayscale 24bit Colour		

PRODUCT FEATURES Image Processing	Auto Page Size Detection & Deskew Skip Blank Page Text Orientation Recognition Auto Colour Detection Colour Dropout (RGB) / Enhancement (Red) Moire Reduction Prevent Bleed Through / Remove Background Batch Separation Scan Area Setting Folio Mode
Device	Auto Power ON/OFF (via USB) Rapid Recovery System Double Feed Detection by Length Ultrasonic Double Feed Detection (DR-2510M) Manual / Bypass Feeding
BUNDLED SOFTWARE† For MAC OS X For Windows	TWAIN Driver, CaptureOnTouch, Presto! PageManager, Presto! BizCard Reader ISIS / TWAIN Drivers, CaptureOnTouch (Windows 2000 / XP Pro / XP Home / Vista)
Consumables	Exchange Roller Kit
Daily Duty Cycle	Approx. 1500 scans/day
<p>* Actual scanning speed may vary depending on your system configuration and PC specifications ** Advanced Text Enhancement I & II available for Window O/S † Supports Mac OS X v.10.3.9 or later and includes Microsoft Windows compatible drivers and software</p> <p>Some images are simulated for clarity of reproduction. All data is based on Canon's standard testing methods. This leaflet and the specifications of the product have been developed prior to the date of product launch. Final are subject to change without notice.™ and ©: All company and/or product names are trademarks and/or registered trademarks of their respective manufacturers in their markets and/or countries.</p>	



Canon Electronics Inc.
www.canon.com

Canon Europa
www.canon-europe.com

English-UK Edition 0139W136
© Canon Europa 2009 (1009)

Canon (UK) Ltd
Woodhatch, Reigate
Surrey RH2 8BF
Telephone No: 01737 220000
Facsimile No: 01737 220022
www.canon.co.uk

Canon Ireland
Arena Road, Sandymount
Industrial Estate
Dublin 18, Ireland
Telephone No: 01 2052400
Facsimile No: 01 2958141
www.canon.ie