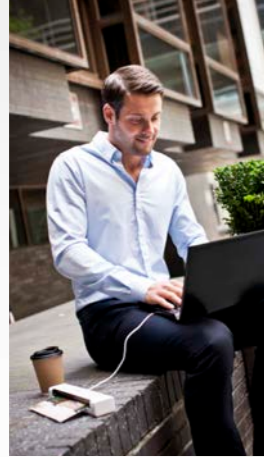


> Use it in your vehicle

> Take it to customer meetings



### Digitising your documents

#### Easy to use

- One touch scanning direct to PC

#### Flexible to save you time

- 2-sided scanning

#### High quality

- Up to 600 x 600 dpi

#### Portability

- Lightweight and compact design
- USB Powered, for complete portability



#### DS-620

- 7.5ppm (mono & colour)
- USB powered
- 600 x 600 dpi resolution
- Bundled software
- One touch scanning
- Plastic card scan



#### DS-720D

- As per DS-620 plus:
- 2-sided scanning (5ppm mono & colour)



#### DS-820W

- As per DS-620 plus:
- Battery powered
  - Wireless connectivity
  - SD card

### Technical Specifications

| GENERAL                                   | DS-620  | DS-720 As per DS-620 plus;  | DS-820W As per DS-620 plus;   |
|---|---|---|---|
| Image Sensor                              | CIS (Contact Image Sensor)  | Dual CIS (Contact Image Sensor) for 2-sided scanning                |   |
| Battery                                   | n/a   | n/a   | Lithium Battery   |
| Memory                                    | n/a   | n/a   | 4GB SD memory card included. SD card size limit 2GB to 32GB   |
| Interface                                 |   | USB 2.0   | USB 2.0, Wi-Fi 802.11 b/g/n   |
| <b>SCANNING</b>                           |   |   |   |
| Standard Mono & Colour Scan Scanner       |   | 7.5 ppm (8 seconds) A4 up to 300dpi                                 |   |
| Standard Mono & Colour Scan Speed 2-sided | n/a   | 5ppm/10ipm (12 seconds per page) A4 up to 300 dpi                   | n/a   |
| Resolution Optical                        |   | Up to 600 x 600 dpi   |   |
| Resolution Interpolated                   |   | 1200dpi   |   |
| Colour Depth                              |   | 48-bit internal & 24-bit external                                   |   |
| Gray Scale                                |   | 256 levels  |   |
| Supported File Formats                    |   | PDF(Standard & Searchable), Tiff, Multi Page Tiff, BMP, GIF, PNG.   |   |
| Scan to Destinations                      | Image, e-mail, file, app, printer, shared network folder, OCR, FTP and SharePoint@1 |   | Scan to Smartphone, tablet & Cloud (using ScanHub) & Scan to SD card  |
| <b>SCANNER DRIVER</b>                     |   |   |   |
| Windows®                                  |   | TWAIN & WIA (Windows® 8, Windows® 7, Windows Vista® & Windows® XP)  |   |
| Macintosh                                 |   | TWAIN (Mac OS X 10.6.X, 10.7.X, 10.8.X)                             |   |
| Linux                                     |   | TWAIN and Scan App available free from the Brother solutions centre |   |
| <b>SOFTWARE FOR WINDOWS®</b>              |   |   |   |
| DsmobileCapture                           |   | Easy to use scan software   |   |
| Button Manager V2                         |   | One touch scanning to e-mail, image, app, folder, FTP or printer    |   |
| Nuance™ PaperPort™ 12SE                   |   | Scan, share, search and organise documents on your PC               |   |
| NewSoft® Presto!@ BizCard 6               |   | Global business card management solution                            |   |
| <b>SOFTWARE FOR MAC</b>                   |   |   |   |
| DsmobileCapture                           |   | Easy to use scan software   |   |
| NewSoft® Presto!@ BizCard 6               |   | Global business card management solution                            |   |
| NewSoft® Presto!@ PageManager 9           |   | Document management & sharing program                               |   |
| <b>Mobile Applications</b>                |   |   |   |
| ScanHub                                   | n/a   | n/a   | Free App for iOS and Android devices, Scan organise and share your documents from your mobile device                    |
| <b>PAPER HANDLING</b>                     |   |   |   |
| Paper Input                               |   | 1 sheet   |   |
| Paper Sizes                               |   | Between 55mm - 215.9mm in width & 90mm - 812.8mm in length          |   |
| Paper Weights                             |   | Between 60 g/m2 & 105 g/m2  |   |
| <b>WEIGHTS &amp; DIMENSIONS</b>           |   |   |   |
| With Carton                               | 352(W)x232(D)x60mm(H) 980g  | 354(W) x 254(D) x 70(H)mm 1.18Kg                                    | 354(W) x 254(D) x 70(H)mm 1.18KG  |
| Without Carton                            | 290.5(W)x52.5(D)x36.7(H) 400g   | 290.5(W) x 66.9(D) x 40.7(H) mm 500g                                | 308(W) x 52.5(D) x 40.7(H)mm 440g   |
| Battery                                   | n/a   | n/a   | n/a   |
| Charging time                             | n/a   | n/a   | 4 hours   |
| Continuous Standby Time                   | n/a   | n/a   | 5 minutes (When the auto power function is active)  |
| Scannable number of sheets (Wi-Fi ON)     | n/a   | n/a   | 90 Sheets   |
| Scannable number of sheets (Wi-Fi OFF)    | n/a   | n/a   | 450 Sheets  |
| <b>ENVIRONMENT</b>                        |   |   |   |
| Power Requirement                         |   | USB bus-power 5V DC   | Scan: USB/Lithium battery<br>Charge: USB/AC adapter<br>Wi-Fi: Lithium battery<br>Wi-Fi Off - 2.45W<br>Wi-Fi on - 4.37W4 |
| Power Consumption(Scanning)               | 2.0W  |   |   |
| Power Consumption(Ready)                  | 0.5W  |   |   |
| Sound Pressure Level (Active)             | 50db  |   |   |

#### Contact:



**brother**  
at your side

Brother UK Ltd, Audenshaw, Manchester M34 5JD  
Tel:+44(0)8444 999 444 Fax:+44(0)161 931 2218  
Web: www.brother.co.uk

All specifications correct at time of printing. Brother is a registered trademark of Brother Industries Ltd. Brand product names are registered trademarks or trademarks of their respective companies.

Material code: ZLFTSCANNERRANGEU2

brother  
at your side

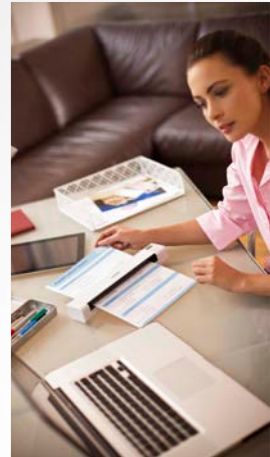
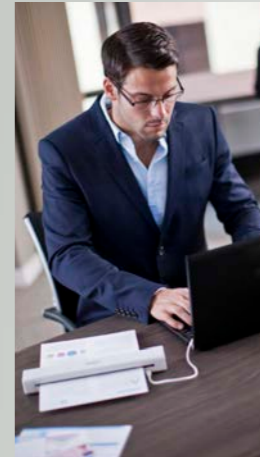
## Digitise, share and archive at home or on the move

Increase the productivity of remote workers with Brother's portable scanner range



Scan in the office

> Use it when working from home



### Organising at home

Scan in documents such as bank statements, wage slips, food recipes and warranties, all of which can be converted into searchable files so your information takes up no room and it's easier to find than it would be on paper. Plus with Brother's DS-620 you can save your digital files however you like, on CD or DVD, on a flash drive, in an online storage facility, or all of the above. So you can be sure that when you need something, you can get your hands on it.

### Enhancing productivity whilst working on the move

Brother's DS-720D and DS-820W mobile scanners are the perfect solution for professionals looking to increase their productivity and improve their workflow by digitising documents anywhere, anytime.

### Designed to complement the user's mobile work life:

- It's simple to capture, archive and share vital business documents with colleagues

wherever you are (e.g. receipts, business cards, invoices, signed orders etc)

- Battery powered\* with lightweight and compact design for complete wireless\* portability
- Scan to Smartphones, Tablets and cloud services\*\* plus searchable PDF, your E-mail Contacts and SD card all designed to help you keep organised
- Cut down on paper clutter while on the move

### Improve customer service and help to close a sale more quickly

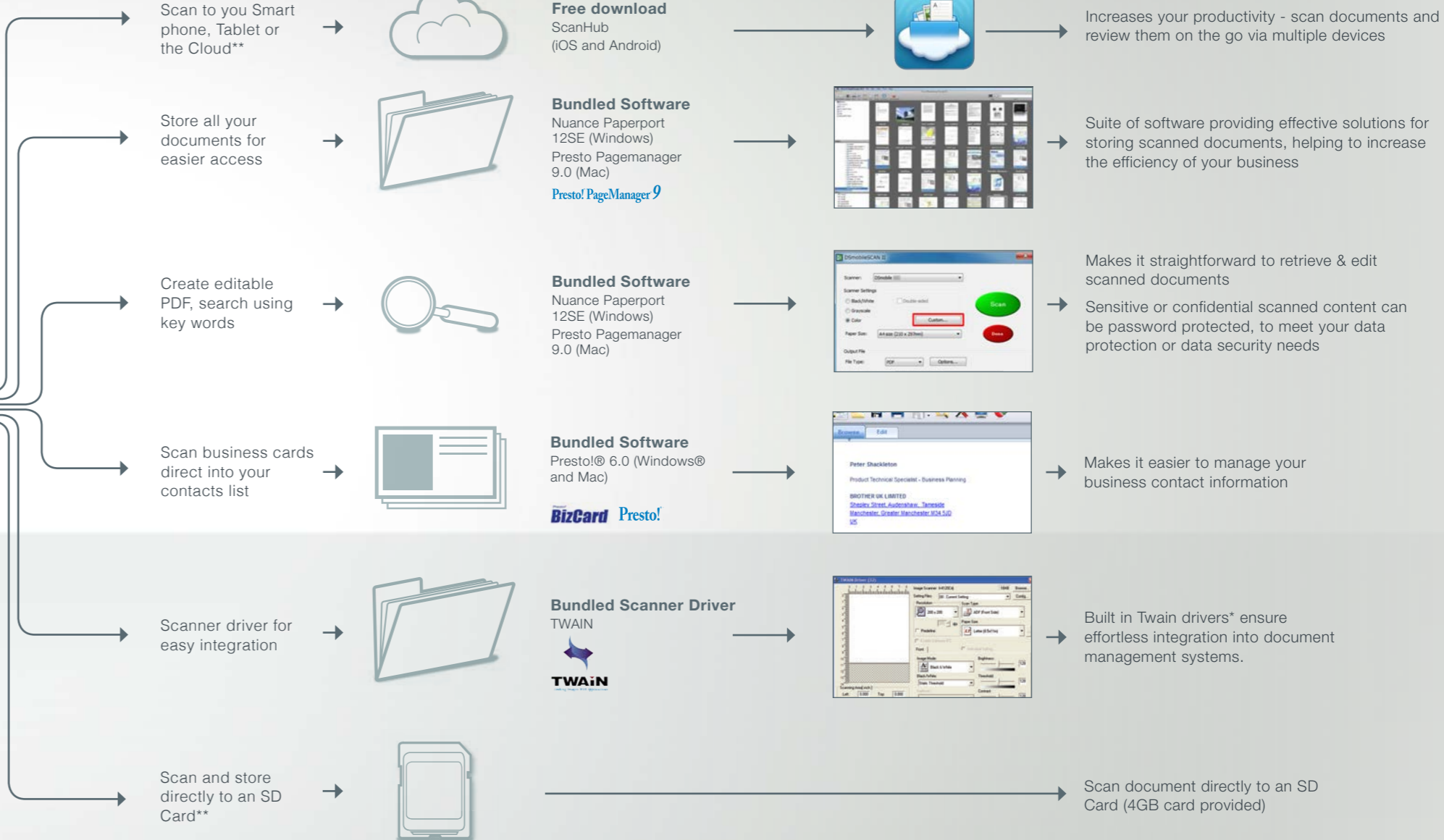
- Enhance workflow - scan the customer's original documents, e-mail them to the office and then return the documents straight away
- Quickly capture signatures or handwritten content
- Prevent loss or damage to confidential/ original documents

\*DS-820W only  
\*\* free ScanHub app may be required



Make your paper productive, capture, archive and share vital documents with colleagues wherever you are. For added connectivity and organisation scan your documents direct to the cloud.

Digitise, share, archive



\*\*DS-820W only