



A3 FACE UP COLOR SCANNER PS5000C

The planetary scanner designed for the face-up scanning of books, sheets, and three-dimensional objects

The PS5000C solves problems that other scanners can't. Now faster and easier to use, the PS5000C can dramatically increase production efficiency.

▶▶ Books are heavy and difficult to turn upside down while open.

The PS5000C scanner doesn't require you to turn books upside down for scanning. Simply open the book to the page you want to scan and position it on the scanner's cradle as if you are about to start reading it.

▶▶ I worry about damaging valuable documents.

The PS5000C automatically recognizes and corrects for the curvature of bound books. There is no need to flatten books to prevent distortion of the text; the scanner makes the necessary corrections in the image.

▶▶ I'd like to be able to scan three-dimensional objects positioned upright.

Even three-dimensional objects that are problematic for standard scanners (approximately 5 cm thickness) can be scanned and converted into digital data with the PS5000C. Simply place the object on the scanner's cradle and press the scan button. The PS5000C can also be used to scan three-dimensional objects at very close to actual size.

▶▶ I need to scan non-standard paper.

With the PS5000C, you can easily scan not only non-standard paper, but also paper that has labels attached to it, or even stapled pages, as long as the original fits within the specified scanning area.



High-precision color, grayscale, and monochrome scanning

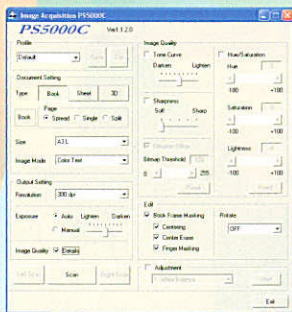
The PS5000C's use of a high-resolution CCD enables precise and beautiful scanning. The standard unit can handle color, grayscale, and monochrome scanning. Monochrome originals can quickly and easily be scanned in monochrome, while color originals can just as quickly and easily be scanned in full color.

The PS5000C's versatility ensures the best possible scanning results, no matter what the original.

Three-dimensional object scanning

Standard flatbed scanners can't scan originals that aren't in contact with the scanning bed, so they aren't well suited for the scanning of three-dimensional objects. The PS5000C color book scanner is a non-contact scanner (face-up scanner), so it's ideal for use with three-dimensional objects.

Highly functional and easy to operate



The use of TWAIN driver makes the PS5000C highly functional and easy to operate. It features large, easy to use scan button, and the scanner setting is simple. And lets you scan originals direct to your desktop computer for desktop publishing, graphics presentation, Email distribution, or fax transmission.

Automatic correction functions

In addition to a function that corrects for the distortion of text commonly encountered when scanning books due to the curvature inherent in bound books and in the binding seam area, the PS5000C features a variety of other digital correction functions, such as automatic center shadow erase, automatic book frame masking, automatic image position centering, and automatic finger masking. These functions help ensure that the original is reproduced beautifully.



A scanning image from a traditional scanner



A scanning image from the PS5000C, with automatic correction applied



Book cradle and Manual switch

The book cradle allows the operator to adjust originals (up to 10 cm thick) side to side and top to bottom. optional Manual switches are located both to the right and left of the original, which makes it easy to scan while holding the original in place or turning the pages.

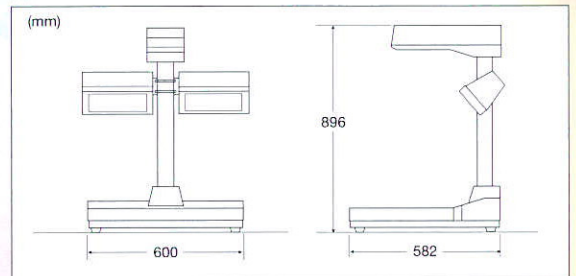


SPECIFICATIONS

Scanner type	Desk top color book scanner for face up originals
Scan area	Max. 297mm (11.69") x 432 mm (17.00")
Maximum publication focal height	100 mm (4.0")
Resolutions	200/240/300/400/600 dpi
Image sensor	Area type CCD sensor
Light source	"U" shaped florescent lamp 18W x 2
Bit depth	24-bit color, 8-bit monochrome, 1-bit monochrome
Scanning speed	Approx. 5.3 seconds (A3, color, 300dpi, book mode)
Scanning features	Automatic book curvature correction , Automatic center shadow erase Automatic frame masking , Automatic finger masking Automatic image position centering , Automatic image rotation
Hardware interface	USB2.0
OS	Windows 2000 , Windows XP Home Edition / Professional
PC environment	CPU : Pentium IV 2.8GHz or faster RAM : 1GB or more
Dimension	600mm (23.63") x 582mm (22.91") x 896mm (35.26") (WxDxH)
Weight	Approx. 30Kg (67.24 lbs.)
Power source	120V 60 Hz / 230V 50-60 Hz
Max. power consumption	Less than 100W
Options	Foot switch, Manual switch, Glass Plate Kit

* In some cases, the curvature may be too great for complete correction.
 * In some cases, the color of the object being scanned may differ somewhat from that of the original.
 * There is a limit to the height of objects that can be scanned.

DIMENSIONS



OPTIONS



Glass Plate Kit



Foot switch