



QuickScan Pro™

Out-of-the-Box Solution for Document Capture

QuickScan Pro (QSP) is an out-of-the-box imaging solution from EMC Captiva®, the creators of ISIS®—the de facto scanner driver and application program interface. QSP provides all the necessary capabilities for high-speed scanning, image enhancement, OCR, viewing, annotation, printing, and storing images for both black-and-white and color pages.

Scanning

QSP is based on Captiva's Image and Scanner Interface Specification (ISIS), which unites a universe of scanners and applications, supporting every feature of leading document scanners. ISIS has become the dominant method of scanner control for essential scanning applications, such as document imaging and OCR. QSP delivers peak performance from every scanning device and can drive more than 300 different scanning devices through SCSI, video, USB, FireWire, and proprietary interfaces. QSP's PixTWAIN layer can support TWAIN scanners if ISIS is unavailable.

OCR

QSP's powerful Optical Character Recognition (OCR) capabilities provide office workers with a tool for converting paper documents to usable text documents. No need to retype paper documents; QSP can do the recognition and conversion without manual intervention. Convert document images to PDF text, XML, Word, Excel, ASCII, HTML and other text file formats. In addition to the full text OCR capability, QSP also supports zonal OCR for copying and pasting partial text from an image to other applications, or populating index fields.

Indexing

Users can easily link their documents with associated information using QSP's indexing capabilities—an important strength of the software that increases the usability of information across the enterprise. Indexing may be done at varied levels throughout the hierarchy: batch, document and page. Manually complete index fields or automatically populate fields with OCR or barcode results.

Viewing

The high-performance viewer delivers many capabilities to both display and manipulate images, such as:

- Fast scaling (zoom in and out)
- Image manipulation
- Thumbnail viewer
- Rotation (90 degree increments)
- Scale-to-gray conversion (improves readability of images)
- Pan window for instantaneous positioning in the view window

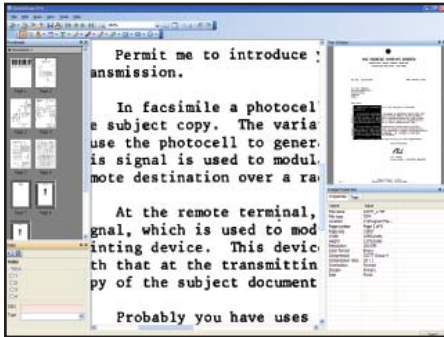
Image Enhancement (Binary and Color)

QSP supports numerous filters to “clean up” a scanned image, and its ability to use both binary and color processes also helps to improve image clarity and fidelity. This provides more accuracy for processes such as

The Big Picture

QuickScan Pro is an out-of-the-box solution for document and data capture that is ideal for small to mid-sized business making the move toward an automated capture environment. QuickScan Pro is a standalone product which can easily integrate into document management systems and serve as a scan module, which feeds scanned, enhanced images into the system.





Dock-able tool windows provide users the ability to personalize the interface for an efficient layout of custom QSP workflows.

OCR/ICR/Barcode recognition while minimizing costly and typically inefficient manual "Reject/Repair" processes. QSP's Image Enhancement functions and filters can also reduce file sizes to make them easier to send and more efficient to store. Some of the filters include barcode recognition, threshold, blank page recognition, line removal, border removal, margin cropping, deskew, patchcode recognition, noise removal, rotation, hole removal and digital stamp.

Barcode Recognition

The barcode filter detects and reads barcodes, including 2D barcodes, anywhere in the image. Supported barcodes include Code 39, UCC/EAN 128, Code 2 of 5, UPCA, EAN-13, Code 128, UPC-E, ISBN Addon 2, Code 93, Codabar, ISBN Addon 5, Interleaved 2/5, EAN-8, Airline 2 of 5, BCD Matrix, Matrix 2 of 5, Code 32, Invert 2 of 5, Datalogic 2 of 5, Datamatrix and PDF 417 (Datamatrix and PDF 417 support are optional add-on).

Automatic Naming

QSP features an automatic file naming functionality, which allows users not only to assign names to files but to organize those files as well. Users may create naming schemas in tune with their enterprise needs. As a schema is selected or created, the bottom portion of the dialog will display a sample of what files will be named and what subdirectories will be created. Files may also be automatically named based on their respective barcodes, which further simplifies and speeds the process of incorporating, and accessing, mission-critical data.

Integrated Job Separation

QSP supports flexible job separation at scan time via patch codes, barcodes, blank pages and page count, allowing scanned images to be conveniently segmented.

Multipage Document Editing

QSP includes multipage document editing capabilities, allowing users to append a multipage document, delete or insert an image in a multipage document, drag and drop an image from one place in a file to another, and much more.

Export to Back-end Systems

QSP's export feature enables users to create export modules to move images directly from QSP to OCR applications or back-end repositories.

Image Annotations

Images can be enhanced with multicolored highlighting, freehand line drawing, polyline drawing, redaction (opaque overlays), "sticky notes," arrows, a stamp tool, a text tool that supports special characters and many other annotations.

Supported File Formats

QSP supports most binary, grayscale and color file formats, including TIFF, PNG, PCX/DCX, BMP, JPEG, JPEG 2000, CALS, JBIG, MO:DCA, GIF, PDA and PDF.

Multistream and Automatic Color Detection

Some new scanners simultaneously create multiple streams of data, notably, binary and color. QSP supports multiple streams and allows the user to work efficiently and effectively with this new scanner feature, when available.

Managed Mode

Through the QSP Managed Mode, IT administrators can easily deploy multiple copies of QSP across an organization and give users access to only the functionality of QSP that their job requires. The Managed Mode allows multiple QSP users to share profiles over a network instead of maintaining multiple profiles for each user. Additionally, administrators can lock down certain features of QSP to prevent unintended use of the application.


 EMC² | captiva

EMC Captiva
 10145 Pacific Heights Boulevard
 San Diego, CA 92121

858.320.1100
www.emc.com/captiva

EMC², Captiva and ISIS are registered trademarks, and QuickScan Pro is a trademark of EMC Corporation. All other trademarks used herein are the property of their respective owners.

© Copyright 2006 EMC Corporation. All rights reserved.

DSQSP 020106