

Open up a new world of scanning possibilities with the ScanSnap S300.



### ScanSnap S300 Technical Specifications

<b>Scanner Type</b>	ADF (Automatic Document Feeder), Duplex color scanning	
<b>Scanning Modes</b>	Color / B&W / Automatic Color & B&W detection	
<b>Image Sensor</b>	CIS (Color Image Sensor) X 2	
<b>Light Source</b>	3 color LED (Red / Green / Blue)	
<b>Optical Resolution</b>	600 dpi x 600 dpi	
<b>Scanning Speed</b> <sup>1</sup> (A4 portrait / AC adapter)	Normal Mode	Color 150 dpi, B&W 300 dpi: 8 pages per minute / 16 images per minute
	Better Mode	Color 200 dpi, B&W 400 dpi: 6 pages per minute / 12 images per minute
	Best Mode	Color 300 dpi, B&W 600 dpi: 4 pages per minute / 8 images per minute
	Excellent Mode	Color 600 dpi, B&W 1,200 dpi: 0.5 pages per minute / 1 image per minute
<b>Scanning Speed</b> <sup>1</sup> (A4 portrait / USB bus power) <sup>2</sup>	Normal Mode	Color 150 dpi, B&W 300 dpi: 4 pages per minute / 8 images per minute
	Better Mode	Color 200 dpi, B&W 400 dpi: 3 pages per minute / 6 images per minute
	Best Mode	Color 300 dpi, B&W 600 dpi: 2 pages per minute / 4 images per minute
	Excellent Mode	Color 600 dpi, B&W 1,200 dpi: 0.5 pages per minute / 1 image per minute
<b>Scanning Range</b>	A4, A5, A6, B5, B6, Business card, Letter, Legal and Custom sizes. Max: 8.5 X 14.17 in. (216 X 360mm), Min: 2 X 2 in. (50.8 X 50.8mm), Automatically recognizes document type by paper length.	
<b>Paper Weight</b> (Thickness)	17 to 28 lb. (64 to 104.7 g/m <sup>2</sup> )	
<b>Paper Chute Capacity</b>	Maximum 10 sheets (A4 size at 20 lb. or 80 g/m <sup>2</sup> )	
<b>Interface</b>	USB2.0 (USB1.1 Compatible)	
<b>Driver</b> <sup>3</sup>	ScanSnap specific driver (TWAIN / ISIS™ not supported) <sup>3</sup>	
<b>Applications</b>	ScanSnap Manager V4.2, ScanSnap Organizer V3.2, CardMinder™ V3.2	
<b>Included items</b>	USB cable, USB bus power cable, AC adapter, AC cable, Getting started guide and Setup CD-ROM	
<b>Power Requirement</b>	AC Adapter	AC 100V to 240V, 50 / 60 Hz
	USB Bus Power	5V / 1A (0.5A X 2 Port)
<b>Power Consumption</b>	Operating: 9W or less	
	Sleep mode: Less than 5W	
<b>Operation Environment</b>	Temperature: 41°F to 95°F (5°C to 35°C)	
	Relative humidity: 20% to 80% (Non-condensing)	
<b>Dimensions</b> (W X D X H) <sup>4</sup>	11.18 in. X 3.74 in. X 3.03 in. (284mm X 95mm X 77mm)	
<b>Device Weight</b>	3.08 lb. (1.4kg) without power adapter	
<b>Environmental Compliance</b>	ENERGY STAR® compliant / RoHS	
<b>Limited Warranty</b>	1 year Limited Warranty. For full details, visit <a href="http://www.fcpa.fujitsu.com/warranties">www.fcpa.fujitsu.com/warranties</a> or call (800) 626-4686	
<b>Service Options</b>	In-warranty Upgrade: Advance Exchange. Post-Warranty: Advance Exchange Plus, Depot Plus, ScanAid Kit, Cleaning and Consumable Kit. For full details on all service programs, visit <a href="http://www.ImagingService.com">www.ImagingService.com</a>	
<b>Part Number</b>	PA03541-B005	

<sup>1</sup> Scanning speeds may vary due to the system environment used. <sup>2</sup> Requires simultaneous connection to two active powered USB ports on computer. <sup>3</sup> TWAIN or ISIS® applications cannot be used directly. <sup>4</sup> When hopper is closed.

### System Requirements

		Windows® 2000 Professional	Windows® XP	Windows® Vista™
<b>Compatible Operating Systems</b>	ScanSnap Manager V4.2	Supported	Supported <sup>1</sup>	Supported
	ScanSnap Organizer V3.2	Supported	Supported <sup>1</sup>	Supported <sup>2</sup>
	CardMinder™ V3.2	Supported	Supported <sup>1</sup>	Supported
<b>Hardware Requirements</b> <sup>4</sup>	CPU	Intel® Pentium® III processor 1.2GHz or higher (Intel® Celeron® M 430 1.73GHz or higher is recommended)		Intel® Pentium® 4 1.8GHz or higher (Intel® Celeron® M 430 1.73GHz or higher is recommended)
	Memory Capacity <sup>3</sup>	512MB or higher (1GB or higher is recommended)		1GB or higher (1GB or higher is recommended)
	Disk Capacity	Spare capacity of a least 920MB is necessary to install the software that is included in this table.		
	CD-ROM Drive	Required for installation		
	USB Port	USB 2.0 / USB 1.1		

<sup>1</sup> Compatible with Windows® 2000 Professional and Windows® XP Professional / Home Edition (Service Pack 1 or higher). <sup>2</sup> Operates most effectively with Windows Vista™ compatible versions of Adobe Acrobat. Use with non-Windows Vista™ compatible versions of Adobe Acrobat might result in the generation of PDF files that cannot be searched. <sup>3</sup> Memory capacity of 1GB or higher is recommended when scanning in "Excellent mode". <sup>4</sup> Scanning speeds may drop if recommended CPU, memory capacity and USB 2.0 requirements are not met.

### Consumables

Description	Model Number	Remarks	Description	Model Number	Remarks
Pad ASSY <sup>1</sup>	PA03541-0002	Lifetime: Every 10,000 sheets or one year.	Pick Roller <sup>1</sup>	PA03541-0001	Lifetime: Every 100,000 sheets or one year.
Cleaner F1	PA03950-0352	100ml bottle. Used to clean Pad ASSY and Pick roller	Cleaning Wipe	PA03950-0419	1 pack (24sheets) Used to clean Pad and Pick roller

<sup>1</sup> These recommended lifetimes are for 17 lb. (64g/m<sup>2</sup>) A4 sized documents. Therefore, appropriate replacement lifetimes may vary for other document types.

### Options

Description	Model Number	Remarks
ScanSnap carrying Case	PA03541-0004	Intended for ScanSnap S300 and included items

**ScanSnap**  
Color Image Scanner

**ScanSnap**  
Color Image Scanner

Introducing the ScanSnap S300.  
The truly portable, full-featured scanner.

S300



**FUJITSU**

THE POSSIBILITIES ARE INFINITE

## Easy to use “one button” scanning!

Just press the “SCAN” button and the ScanSnap S300 quickly captures both sides of documents, presenting images as they are meant to be seen. The Fujitsu ScanSnap S300 provides a host of automatic image correction features to ensure great scanning results. Simply load a stack of documents into the hopper and press the “SCAN” button. The S300 automatically recognizes the size of each document, detects and corrects for skew, and shows images in their proper orientation with blank pages removed.



Instantly creates scans that can be searched by their content. The ScanSnap S300 automatically converts scanned data into searchable PDF files that let you quickly and easily locate your images and find information contained within your documents using keyword searches.



It's the world's smallest duplex ADF scanner designed to provide best-in-class performance inside or outside of the home or office.

**Compact Mobile Scanning Solutions.** At half the size of other ScanSnap scanners, the S300 is designed to be the smallest Fujitsu ADF scanner. As a mobile alternative, the ScanSnap S300 is compact enough to carry around and you will never have to worry about finding a spot to put it.

**Holds up to 10 letter sheets at a time.** Double Sided Multi-Sheet Feeding. The ScanSnap S300 holds up to 10 sheets of paper in the automatic document feeder and scans up to 8 pages per minute.

**Operates on USB bus power.** For added mobile convenience, the Fujitsu ScanSnap S300 can be powered through the PC's USB port\* when an AC power source is not available.

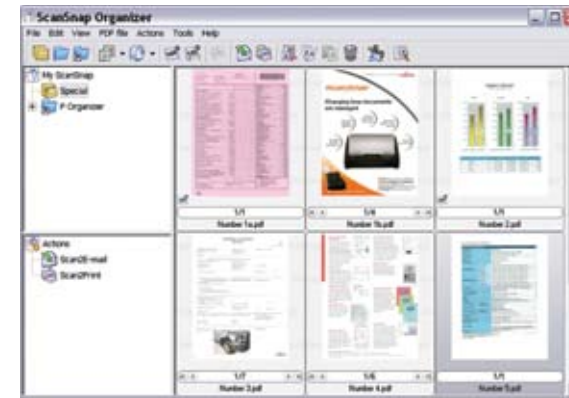
\*When using the USB bus power cable, the PC must have two USB ports; one for power feeding and the other for USB cable connection.

**Scans anything from thick business cards and postcards to legal size documents.** In addition to automatically recognizing document size, the ScanSnap S300 de-skews images, removes blank pages and shows them in their proper orientation. The ScanSnap S300 is also able to scan business cards and postcards that are thicker than normal (Up to 56 lb.)



### The easy way to organize and view PDF files.

- View PDF and JPEG files with the thumbnail viewer
- Arrange files with simple drag and drop actions
- Easily insert and delete images
- Change thumbnail display sizes
- Automatically creates searchable PDF files
- Quick drag and drop to e-mail or to a printer



### Efficiently manage business cards and contact information.

Quickly scan business cards for fast and easy reference. Capture both sides of a business card in a single pass. Information on the business card is captured and can be exported to Outlook, CSV (Excel), and others.



Contact your distributor  
or buy online at  
<http://scansnap.fujitsu.com>

