

ScanSnap

Color Image Scanner

Changing how documents are managed

Scan directly to Microsoft® applications

New multi-function Quick Menu feature

Easily protect, preserve, & share documents

One button scanning to searchable PDF

Business card scanning



Color Duplex
18 pages
per minute!

S510



Included to work with Microsoft® Windows® Operating Systems

ADOBE® ACROBAT® 8 STANDARD

Providing Authentic Adobe PDF Creation

ScanSnap Organizer V3.1 PDF File Arranging & Viewing Software

PFU CardMinder™ V3.1 Business Card Scanning Software

Enhance productivity with Fujitsu service and support

Features:

Scan 18 double-sided pages per minute:

In one step, the Fujitsu ScanSnap S510 scanner digitizes both sides of a document in a single pass, in color, and at an amazing speed of up to 18 pages per minute.

Advanced features for the ultimate ease of use!

With a touch of the button the ScanSnap S510 scanner enhances the user experience with a host of automatic features, including:

Auto paper size detection

Scan mixed batches of documents containing paper ranging in size from business cards to legal sized documents.

Auto de-skew

Automatically straightens and aligns text and images into their correct orientation.

Auto blank page removal

Save storage space and eliminate the need to edit scanned documents with the ScanSnap S510's ability to recognize and delete blank pages.

Instantly create searchable PDF files:

The included "ScanSnap Organizer" automatically converts scanned data into searchable PDF files, while the ScanSnap S510's image enhancement technology increases character recognition for more precise OCR accuracy.

Scan directly to Microsoft® Office Applications:

The bundled ABBYY FineReader® software enables the user to scan documents directly to applications such as Microsoft Word, Excel® and PowerPoint software

Quickly organize business card information:

Scan business cards directly to your contacts database with the included CardMinder™ application. CardMinder captures information written in 8 languages from scanned business cards images and stores this information in an easily accessible format.

Increase productivity with enhanced functionality:

The new Quick Menu provides dynamic control over the destination of scanned documents. If attaching scans directly to an email, the user can quickly change the file name and protect it with a password for added security.

Simple installation and operation in a compact design!

The ScanSnap S510 scanner easily installs via its USB 2.0 interface and its small footprint requires less space than a letter size piece of paper.

Advance Exchange service program maximizes uptime:

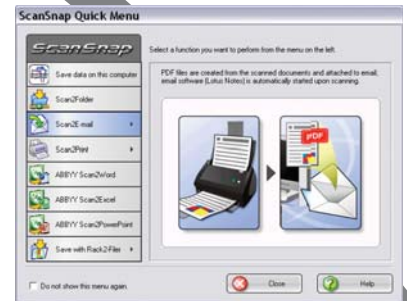
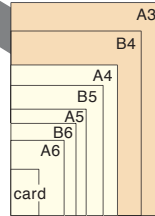
The ScanSnap S510 scanner is covered by a one-year Limited Warranty. An upgrade to the Advance Exchange service program (sold separately) is also available to eligible purchasers at www.BuyFCPA.com. For full details on the Limited Warranty and on all service programs, go to www.ImagingService.com or call (800) 626-4686.



ScanSnap

Color Image Scanner

Quickly and easily digitize various document types!



General Technical Specifications		
Product Name	ScanSnap S510	
Scanner type	ADF (Automatic Document Feeder), Duplex color scanning	
Output	Color / Black & White / Auto color or Bi-tonal Detection	
Output Format	Authentic Adobe PDF and JPEG	
Image sensor	Color CCD (charged coupled device) x 2	
Optical Resolution	600dpi	
Scanning Speed (A4) ¹	Normal Mode	Color 150dpi, B&W 300dpi: Duplex 18 pages per minute/36 images per minute
	Better Mode	Color 200dpi, B&W 400dpi: Duplex 12 pages per minute/24 images per minute
	Best Mode	Color 300dpi, B&W 600dpi: Duplex 6 pages per minute/12 images per minute
	Excellent Mode	Color 600dpi, B&W 1,200dpi: Duplex 0.6 pages per minute/1.2 images per minute
Scanning Range	A4, A5, A6, B5, B6, Business card, Letter, Legal and Custom sizes (can be set for up to 5 different paper types)/Automatically recognizes paper type by paper length. Use of Carrier Sheet permits the scanning of A3, B4, double letter and photographs as well as those listed above.	
Paper Weight (Thickness)	14 to 34 lbs (52 to 127g/m ²)	
Hopper Capacity	50 Sheets (20lb)	
Interface	USB 2.0 (USB 1.1 Compatible)	
Driver ²	ScanSnap Manager (TWAIN/ISIS [®] not supported) ²	
Software Applications ³	Adobe® Acrobat® 8.0 Standard, ScanSnap Manager v4.1, ABBYY FineReader® for ScanSnap 3.0, CardMinder v3.1, ScanSnap Organizer v3.1 and Rack2-File (Trial version).	
Compatible Operating System for Hardware	Windows 2000 Pro (SP4) / XP (SP2) / VISTA (32-bit)	
System Requirements	Intel® Pentium® 4 @ 1.8 GHz or higher, 512 MB of memory or higher, 1400 MB of disk storage (to accommodate all bundled software), CD-ROM drive, and USB 2.0 (recommended) or USB 1.1 interface.	
Power Requirement	AC 100 to 240V, 50 / 60 Hz	
Power Consumption	Operating: 28W or less, Standby: 6W or less, Sleep: 1W	
Operation Environment	Temperature	41°F to 95°F (5°C to 35°C)
	Relative Humidity	20 to 80% (non-condensing)
Dimensions (W x D x H)	11.2 x 6.2 x 6.2 in (284 x 157 x 158 mm) ³	
Device Weight	5.9 lb. or less, without power adapter	
Environmental Compliance	ENERGY STAR® Compliant	
Limited Warranty	1 year Limited Warranty. For full details, visit www.fcps.fujitsu.com/warranties or call (800) 626-4686	
Service Options	In-Warranty Upgrade - Advance Exchange Post-Warranty - Advance Exchange Plus For full details on all service programs, visit www.ImagingService.com	
Part Number	PA03360-B515	

Consumables		
Description	Part Number	Remarks
Pad Assembly	PA03360-0002	Consumable Life: Every 50,000 sheets or one year
Pick Roller	PA03360-0001	Consumable Life: Every 100,000 sheets or one year
ScanAid™ Kit	CG01000-510501	Includes 2 Pad assemblies, 1 Pick roller and cleaning kit
Options		
Description	Part Number	Remarks
ScanSnap Carrier Sheet*	PA03360-0013	5 carrier sheets. Intended for use with the ScanSnap S510, S500, and fi-5110E0X series scanners
ScanSnap Bag	PA03951-0651	Intended for ScanSnap S510, S500, S500M and fi-5110E0X series scanners and included items

* Although ScanSnap Carrier Sheets have a listed lifespan of 500 scans, life spans may vary. ScanSnap Carrier Sheets are used to scan documents containing paper that weighs less than 127g/m² as well as folded documents as large as 216mm x 297mm.

ADOBE ACROBAT® 8 STANDARD



© 2007 Fujitsu Computer Products of America, Inc. All rights reserved. Fujitsu and the Fujitsu logo are registered trademarks and The Possibilities are Infinite is a trademark of Fujitsu Limited. As an ENERGY STAR® Partner, Fujitsu Ltd. has determined that this product meets the ENERGY STAR® guidelines for energy efficiency. ENERGY STAR® is a U.S. registered trademark. Intel and Pentium are trademarks or registered trademarks of Intel Corporation or its subsidiaries in the United States and other countries. Adobe and Acrobat are either registered trademarks or trademarks of Adobe Systems Incorporated in the United States and/or other countries. Microsoft, Word, Excel, PowerPoint, Internet Explorer, Windows and Vista are either registered trademarks or trademarks of Microsoft Corporation in the United States and/or other countries. All other trademarks are the property of their respective owners.

All statements herein are valid only in the U.S. for U.S. residents, are based on normal operating conditions, are provided for informational purposes only, and are not intended to create any implied warranty of merchantability or fitness for a particular purpose. Fujitsu Computer Products of America, Inc. reserves the right to modify at any time without prior notice these statements, our products, their performance specifications, availability, price and warranty, post-warranty and service programs.

Printed in the U.S.A. Qty. 10M P/N DS3730057

<http://scansnap.fujitsu.com>

Fujitsu Computer Products of America, Inc.
<http://us.fujitsu.com/fcpa>
 1255 East Arques Avenue, Sunnyvale, CA 94085-4701
 Telephone: (800) 626-4686 (408) 746-7000
info@fcps.fujitsu.com

¹Scanning speeds will drop if recommended CPU, memory capacity, and USB 2.0 requirements are not met
²TWAIN or ISIS applications cannot be used directly.

³Stacker attachments excluded.

⁴Adobe Acrobat 8.0 Standard is not fully supported by Windows® Microsoft Vista™ at the time of this printing. Please see Adobe website at www.adobe.com for details related to current Vista support.

⁵Installing Adobe® Acrobat® 8.0 Standard in addition to the other software included with this scanner will require additional 300MB of File Cache memory and Internet Explorer® 6 or higher.

THE POSSIBILITIES ARE INFINITE